

Visitors Guide

JOHNSTON COUNTY
NORTH CAROLINA



Built in 1880 as a boarding house, the Yelvington- Lee House was moved in 1987 to become the home of the Johnston County Visitors Information Center and the Greater Smithfield Selma Area Chamber of Commerce.

The Visitors Center is located on 1115 Industrial Park Drive, adjacent to the Carolina Premium Outlets, I-95 Exit 95 or 97. Hours open to the public are 8:30am-5pm, Mon-Fri. After-hours information is available at the gazebo.



For the latest travel information, stop by our visitor information center adjacent to the Carolina Premium Outlets in Smithfield, or visit us on the world wide web.

1-800-441-stay

www.johnstoncountync.org
info@johnstoncountync.org

Keep up with on Facebook,
Twitter, YouTube, and Flickr!



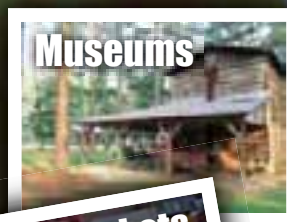
© 2012 Johnston County Visitors Bureau.
The information in this guide is believed to be accurate at the time of printing. Information and prices are subject to change without notice. Call individual businesses for confirmation. The Johnston County Visitors Bureau assumes no responsibility for errors or omissions. Corrections are welcome.

Visitors Guide

Smithfield ♦ Selma ♦ Clayton ♦ 40/42
Benson ♦ Four Oaks ♦ Kenly

It's our

Mature



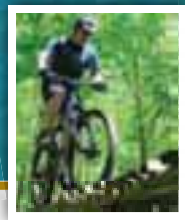
Three Vineyards
and Wine Trail

JOHNSTON COUNTY
NORTH CAROLINA

1-800-441-stay
www.johnstoncountync.org

We invite you to discover and explore our destinations along the I-95 and I-40 corridors in Johnston County, North Carolina, which are often characterized by such phrases as “small town charm”, “friendly” or “a taste of Americana”.

You will find all that and more!



The country crossroads of Johnston County are filled with history and tradition that lead you back to the beauty of the land and the heritage of Eastern North Carolina.

We offer you comfortable lodging, dining, and outstanding museums, festivals and outlet shopping that will tempt and entertain you.



JOHNSTON COUNTY

VISITORS • BUREAU

1535-A Booker Dairy Road • Smithfield, NC 27577
(919) 989-8687 • fax (919) 989-6295

1-800-441-stay

www.johnstoncountync.org
info@johnstoncountync.org

Contents

History	2
Facts & Maps	4
Accommodations	6
Things to do	8
agri-tourism	8
amusements	8
art galleries	9
day spas	9
history & heritage	10
performing arts	11
nature & outdoor	11
sports facilities	12
golf courses	13
Places to shop	14
Places to eat.....	20
Places to meet	26
Transportation	28
Annual events	29

History

Johnston County

www.johnstonnc.com | 919-989-5001

The county was named for Gabriel Johnston, Royal Governor of North Carolina from 1734 to 1752. Tuscarora Indians, a tribe of great size and strength, originally inhabited Johnston County. Early settlers to the county were Scots and English. A riverside courthouse was built in Smithfield in 1771 and served as the seat of county government until 1786 when the court ordered a new one built at Second and Market Streets, where the NC legislature met on May 3-5, 1779. From early in its history, agriculture has been an economic asset of the area. In the antebellum period, Johnston County was producing corn, wheat, oats, a considerable amount of cotton, and some wool. As the end of the century approached, the county became known for its tobacco production. The Smithfield Tobacco Market operated for over 100 years and, Johnston County continues to be a strong agricultural county in North Carolina.

Archer Lodge

www.townofarcherlodge.com | 919-359-9727

Archer Lodge is the newest town created in Johnston County, chartered in November of 2009. This crossroads community is located just north of the Town of Clayton.

Benson

www.townofbenison.com | 919-894-3553

Chartered in 1887, Benson was built around the Wilmington and Weldon Railroad. Today, Benson continues to grow as a booming farming and manufacturing community of 3,600. A thriving downtown commercial district is surrounded by historic neighborhoods and beautiful homes.

Clayton

www.townofclaytonnc.com | 919-553-5002

The Town of Clayton was built on the road that was cut by Governor Tryon's troops as they marched from New Bern to Hillsborough against the Regulators around 1770. The community was first known as Stallings' Station, a depot for the North Carolina Railroad in the home of Mrs. Sarah Stallings. The first post office was located just southeast of the present site, under the name of Gulleys' Store. On January 30, 1856, the name was officially changed to Clayton named for a senator from Delaware. The Town of Clayton was incorporated in 1869. Today it is a thriving community and the second largest town in Johnston County.

Four Oaks

www.fouroaks-nc.com | 919-963-3112

Chartered in 1889, Four Oaks is a center for the farming community, located along I-95 and the Seaboard Coast Line Railroad. The quaint village atmosphere, friendly merchants, and strong community spirit have made the town of approximately 1,500 residents a very attractive community.



Kenly www.kenlynorthcarolina.com | 919-284-2116

Kenly and the Town of Benson were granted charters on the same day, March 7, 1887. Kenly was named in honor of an executive of the north-south railroad who eventually became president of the Atlantic Coast Line Railroad. "Old Beulah Town" as the unincorporated village was called, had been an important settlement since antebellum years, one of several rural settlements in upper Johnston that prospered during the 19th century.

Micro 919-284-2572

If Four Oaks and Kenly were tiny places on the rail map of 1890, a new town that began to emerge along the north-south railroad in the late 1890's was so tiny that it would acquire a name derived from a Greek word meaning "small". As years went by, Micro has remained the smallest incorporated town in Johnston County with fewer than 600 residents. Micro has developed a community spirit that would enable its citizens to say the quality of a community is not determined by the number of its inhabitants.

Pine Level www.pinelevel.org | 919-965-2284

By the end of the 1860s, the settlement of Pine Level, lying along the east-west railroad between Clayton and Boon Hill, seemed destined for incorporation. Pine Level became a municipality under state charter in 1874, and derived its name from its physical surroundings.

Princeton www.myprincetonnc.com | 919-936-8171

The Boon families settled the village of Boon Hill in eastern Johnston County as early as the 1740s. Boon Hill was the forerunner of Princeton receiving a municipal charter from the State Legislature in 1861 and is the second oldest town in the county. Reportedly, a prominent citizen and native of New Jersey and an admirer of Princeton University influenced the name change in 1873.

Selma www.selma-nc.com | 919-965-9841

Selma was founded by Confederate Civil War Officer, Col. John W. Sharpe in 1887. He moved the Mitchener Station approximately one mile down the tracks and sold plots around the station. As in the 1800s, the railroad continues to play a role in Selma; Amtrak is located in the historic train station in downtown. Selma is home to a variety of antique stores and specialty shops.

Smithfield www.smithfield-nc.com | 919-934-2116

Chartered in 1777, Smithfield is the hub of business and government activity for Johnston County. Smithfield was named for John Smith who owned much of the land on both sides of the Neuse River. Downtown Smithfield features several blocks of revitalized stores, historic buildings and churches.

Wilson's Mills www.wilsonsmillsnc.org | 919-938-3885

Founded in 1868, the Town of Wilson's Mills was named for John Marshall Wilson and his family's manufacturing enterprise, a millwork operation of large proportions. Wilson settled along the railroad, and operated a grist mill, a cotton gin, a lumber mill and a framing factory, whose ornamental framework is still a focal point of many homes throughout Eastern North Carolina.



Facts & Maps

Our Climate

Average summer temperature	82°
Average winter temperature	43°
Mean annual temperature	62°
Annual rainfall	46 inches
Percentage of possible sunshine	74%

Johnston County...

is one of the fastest growing counties in the United States – ranked #58. The current estimated population of Johnston County is 168,000.

With 795 square miles, the county is the 10th largest in size among the 100 counties in North Carolina.

The Norfolk Southern and Atlantic Coastline Railroads growth throughout Johnston County in the 1850s to 1880s had the greatest impact on the growth of the county.

NC Driving Laws



Citywide speed limits are 35mph, unless otherwise posted. The statewide speed limit is 55mph, unless otherwise posted on certain sections of interstate and divided highways.

North Carolina law requires seatbelts for all front seat and backseat passengers.

Children under the age of 4 must ride in a child restraint meeting Federal standards.

State law requires motorists to use headlights whenever windshield wipers are used for inclement weather.

Motorcyclists are required to wear helmets and burn headlights at all times.

A right turn on red light is permitted unless otherwise indicated.

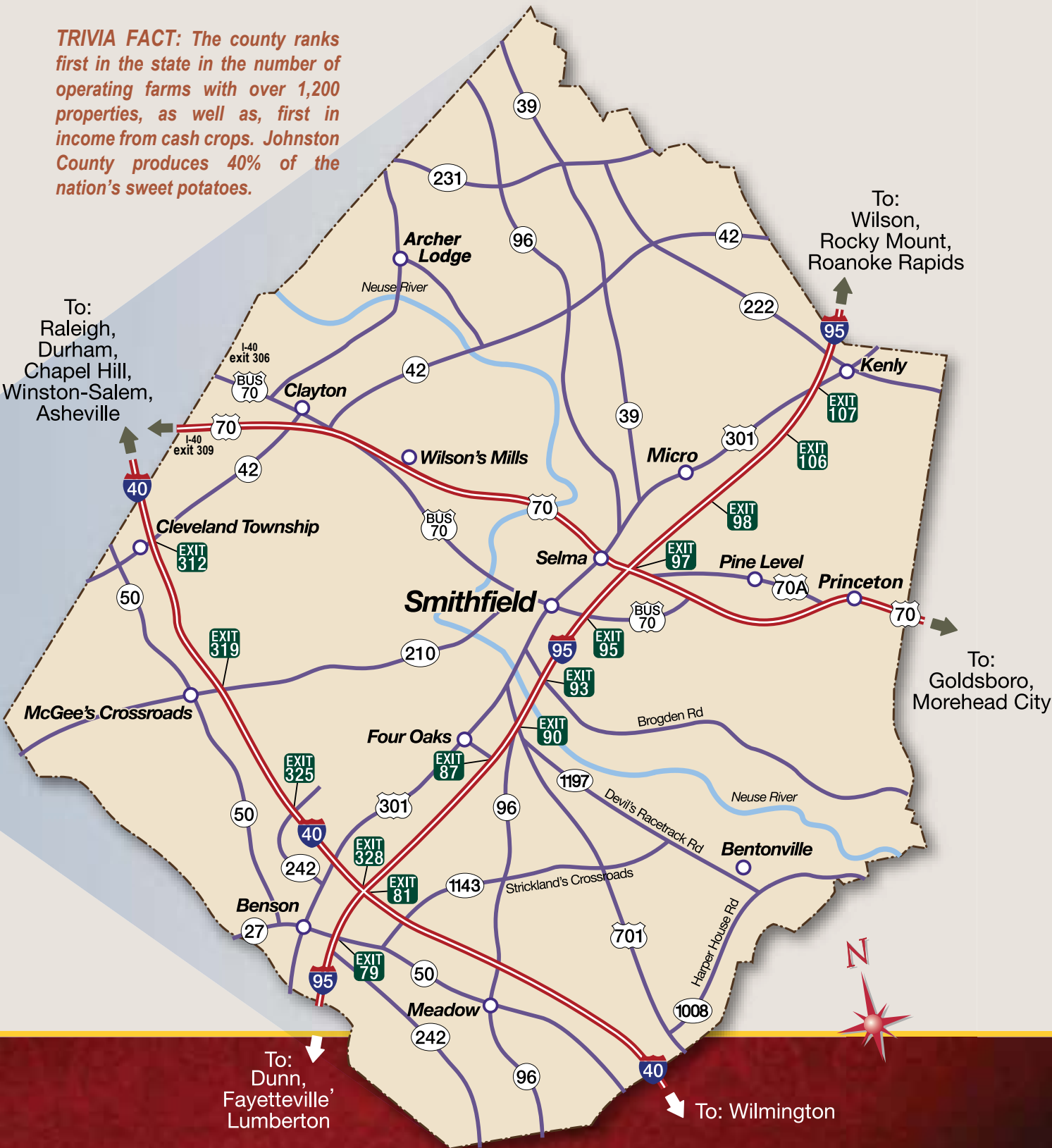


Important Phone Numbers

Benson Area Chamber of Commerce	919-894-3825
Clayton Area Chamber of Commerce.....	919-553-6352
Downtown Smithfield	
Development Corporation.....	919-934-0887
Four Oaks Chamber of Commerce	919-963-4004
Greater Cleveland Chamber of Commerce	919-773-8448
Greater Smithfield Selma	
Area Chamber of Commerce.....	919-934-9166
Johnston County District Attorney's Office	919-209-5520
Johnston County Government.....	919-989-5100
Johnston County Schools	919-934-6031
Johnston County Sheriff's Office.....	919-989-5010
Johnston Health - Smithfield	919-934-8171
Johnston Health - Clayton.....	919-585-8000
Kenly Area Chamber of Commerce	919-284-5510

NC Division of Tourism, Film and Sports Development.....	800-733-4171
Selma Visitors Center.....	919-965-5529
Town of Archer Lodge.....	919-359-9727
Town of Benson	919-894-3553
Town of Clayton	919-553-5002
Town of Four Oaks	919-963-3112
Town of Kenly	919-284-2116
Town of Micro	919-284-2572
Town of Pine Level.....	919-965-2284
Town of Princeton.....	919-936-8171
Town of Selma	919-965-9841
Town of Smithfield.....	919-934-2116
Town of Wilson's Mills	919-938-3885

TRIVIA FACT: The county ranks first in the state in the number of operating farms with over 1,200 properties, as well as, first in income from cash crops. Johnston County produces 40% of the nation's sweet potatoes.



Accommodations

Hotels/ Bed & B

Benson	Days Inn	919-894-2031	202 N. Honeycutt St., Benson	I-95, Exit 79
	Preston Woodall House Bed & Breakfast	919-894-7025	201 E. Hill St., Benson	Downtown Benson
Clayton	Comfort Suites	919-553-1234	761 Enterprise Dr., Clayton	US Hwy 70 Bus.
	Dr. Watson Inn	919-553-6173	500 Flowers Pkwy., Clayton	NC Hwy 42 E.
	Morning Glory Inn	919-550-8547	507 East Second St., Clayton	Downtown Clayton
	Snuggle Inn Bed & Breakfast	919-553-4676	2121 Powell Dr., Clayton	Old US Hwy 70 W
Four Oaks	Four Oaks Lodging	919-963-3596	4606 US Hwy 301 S., Four Oaks	I-95, Exit 90, US Hwy 301 S
	The Dwelling Place Bed & Breakfast	919-963-4088	6734 US Hwy 301 S., Four Oaks	US Hwy 301
	Travelers Inn	919-934-4194	97 NC Hwy 96 S., Four Oaks	I-95, Exit 90
I-40, Exit 312 Garner	Comfort Inn	919-773-1110	126 Cleveland Crossing Dr., Garner	I-40, Exit 312
	Hampton Inn	919-773-1977	100 Hampton Dr., Garner	I-40, Exit 312
	Holiday Inn Express	919-719-3415	105 Leone Ct., Garner	I-40, Exit 312
	Sleep Inn	919-772-7771	105 Commerce Pkwy., Garner	I-40, Exit 312
	Super 8	919-661-1991	101 Leone Ct., Garner	I-40, Exit 312
	Value Place	919-779-5800	142 Cleveland Crossings Dr., Garner	I-40, Exit 312
Kenly	Budget Inn	919-284-5588	212 S Church St., Kenly	I-95, Exit 107
	Days Inn	919-284-3400	1139 Johnston Pkwy., Kenly	I-95, Exit 106
	Deluxe Inn	919-284-3655	403 US Hwy 301 S., Kenly	I-95, Exit 107
	Econo Lodge	919-284-1000	405 S. Church St., Kenly	I-95, Exit 107
	Super 8	919-284-3800	843 Johnston Pkwy., Kenly	I-95, Exit 106
Selma	Selma Inn	919-965-3762	419 US Hwy 70 E., Selma	I-95, Exit 97
	Hampton Inn	919-965-6151	1695 Industrial Park Dr., Selma	I-95, Exit 97
	Days Inn	919-965-4000	115 US Hwy 70A, Selma	I-95, Exit 97
	Luxury Inn	919-202-0000	100 Graham St., Selma	I-95, Exit 97
	Masters Inn	919-965-3771	318 US Hwy 70 E., Selma	I-95, Exit 97
	Quality Inn	919-965-5200	1705 Industrial Park Dr., Selma	I-95, Exit 97
	Regency Inn Selma	919-975-0102	300 Graham St., Selma	I-95, Exit 97
Royal Inn	919-965-3716	1780 Industrial Park Dr., Selma	I-95, Exit 97	
Smithfield	America's Best Value Inn	919-934-7176	197 Mallard Rd., Smithfield	I-95, Exit 95
	Becky's Log Cabin Motel & Restaurant	919-934-1534	2491 US 70 Bus E., Smithfield	I-95, Exit 95
	Best Western Inn	919-989-4047	145 South Equity Dr., Smithfield	I-95, Exit 95
	Comfort Inn	919-938-4444	170 S. Equity Dr., Smithfield	I-95, Exit 95
	Jameson Inn	919-989-5901	125 S. Equity Dr., Smithfield	I-95, Exit 95
	Sleep Inn & Suites	919-209-2360	270 N. Equity Dr., Smithfield	I-95, Exit 95
	Super 8	919-989-8988	735 Industrial Park Dr., Smithfield	I-95, Exit 95
	Village Motor Lodge	919-934-7126	198 Mallard Rd., Smithfield	

Camping

Four Oaks RV Resort	919-963-6675	4596 US Hwy 301 S.
Happy Trails Campground	919-796-1208	406 US Hwy 701 S.
Howell Woods Environmental Learning Center – Cabins & Camping	919-938-0115	6601 Devil's Racetrack Rd.
RVacation RV Park	919-965-5923	I-95, Exit 98
Smithfield KOA	919-934-3181	I-95, Exit 90

breakfast

www.daysinn.com	103	■	■	■	■	■	■	■	■	■	★★	\$48-68
www.woodallhouse.com	12	■		■				■	■	■		\$100-295
www.choicehotels.com/hotel/nc302	60	■	■	■		■	■	■	■	■	★★★	\$94-109
www.flowersplantation.com/village/watsoninn	3	■	■	■		■	■	■	■	■		\$150-200
www.morning-glory-inn.com	5		■	■				■	■	■		\$99-119
www.snuggle-innnc.com	2			■				■	■	■		\$200
www.fouroakslodging.com	12		■	■	■				■	■		\$25.94-59.94
	4		■	■				■	■	■		\$60-75
	53		■	■	■				■	■		\$33-50
www.choicehotels.com/hotel/NC366	63	■	■	■		■	■	■	■	■	★★★	\$77-125
www.hamptoninn.com	72	■	■	■		■	■	■	■	■	★★★	\$89-105
www.hiexpress.com/claytonnc	67	■	■	■		■	■	■	■	■	★★★	\$85.99-140.99
www.choicehotels.com/hotel/nc321	88	■	■	■	■	■	■	■	■	■	★★★	\$68 -110
www.super8.com	39	■	■	■	■	■			■	■	★★	\$55-65
www.valueplace.com	115	■	■						■	■		\$199-299 Week
	17				■				■	■		\$30-60
www.the.daysinn.com/kenly06939	74	■	■	■	■	■			■	■	★★	\$49-55
	25		■		■				■	■		\$40-50
www.econolodge.com/hotel/nc229	60	■	■	■	■	■			■	■	★★	\$45-150
www.super8.com	80	■	■	■	■				■	■		\$48-75
	120	■	■	■	■	■			■	■		\$48-79
www.hamptoninn.com	76	■	■	■		■	■	■	■	■	★★★	\$107- 119
www.daysinn.com/hotel/26253	52	■	■	■		■	■		■	■	★★★	\$70-145
www.luxeryinn-nc.com	48		■		■							\$25-32
www.mastersinn.com	119	■	■		■	■		■	■	■		\$34.95-41.95
www.choicehotels.com/hotel/nc145	80	■	■	■	■	■			■	■	★★	\$54-100
	131	■	■		■	■			■	■		\$34.95-50.00
	117	■	■	■	■	■			■	■		\$39.95-47.95
www.americasbestvalueinn.com	60	■	■	■	■	■			■	■		\$43-60
www.beckyslogcabin.com	60	■	■	■	■	■			■	■	★★	\$45-52
www.bestwestern.com/smithfieldinnnorthcarolina	57	■	■	■		■	■	■	■	■	★★★	\$70-85
www.choicehotels.com/hotel/nc510	72	■	■	■	■	■			■	■	★★★	\$43-60
www.jamesoninns.com	40	■	■	■		■	■		■	■	★★	\$59-80
www.choicehotels.com/hotel/nc466	74	■	■	■		■	■	■	■	■	★★★	\$75-110
www.super8.com	79	■	■	■	■	■			■	■	★★★	\$59-110
	101		■	■	■	■			■	■		\$28.99-46.99

ADA	■
non-smoking rooms	■
Continental Breakfast	■
Pets	■
Swimming Pool	■
Exercise Facility	■
Meeting Rooms	■
Internet Access	■
Interior Corridor	■
AAA Rating	★★



www.fouroaksvrresort.com	21	■				■						\$19-38
	21											\$29.50
www.howellwoods.org	4			■								Call for rates
www.rvacation.us	51			■	■	■						\$25-39
www.smithfieldKOA.com	86	■	■	■	■	■						\$30-85

Cable TV	■
Swimming Pool	■
Showers	■
Store	■
Internet	■

Things to do

Agri-tourism Attractions

Atkinson Milling Company 800-948-5707
95 Atkinson Mill Rd., Selma | www.atkinsonmilling.com

Built in 1757, Atkinson's Milling Co. is the only water powered grist mill operating in a four county area. The cornmeal is stone ground and is noted for its quality. Products available for sale on-line or at the office. Call for hours, tours available

Banks Miniature Horse Farm 919-412-1684
2667 Peele Rd., Clayton | www.banksminiaturehorsefarm.com

Home of many fine miniature horses from outstanding bloodlines, the farm strives to provide an atmosphere where horses are admired and respected. Visitors may park along the driveway and admire the horses.

Boyette Farms 919-553-0016
1620 Loop Rd., Clayton | www.claytonfearfarm.com, www.lightsontheneuse.com
Home of Clayton Fear Farm, weekends in October and Lights on the Neuse, weekends in December.

Creekside Farm, LLC 919-965 9969
300 Pine Tree Rd., Selma | www.creeksidefarmberries.com
Growing top-quality blueberries providing a safe and fun experience for families to pick-your-own. Open Memorial Day through mid August, closed on Friday.

Enoch Winery & Vineyard / Enoch's Bistro 919-207-0100
3735 NC Hwy 50 S., Benson | www.enochwinery.com
Fruit wine tasting including muscadine, bramble, apple, and peach. Small fruits available including seasonal muscadine grapes, blackberries and blueberries. Bistro open for fine dining.

Gregory Vineyards 919-894-7700
275 Bowling Springs Dr., Angier | www.gregoryvineyards.com
Come and relax at Gregory Vineyards. Escape to a quiet country setting and enjoy a picturesque view of rolling hills, vineyards, spring fed lakes in a private country setting. Take a tour of the vineyards or enjoy a wine tasting. Gift shop. Call for hours.

Hinnant Family Vineyards & Winery 919-965-3350
826 Pine Level-Micro Rd., Pine Level | www.hinnantvineyards.com
Take a tour of the vineyards or enjoy a wine tasting at the largest muscadine vineyard in the state with 75 sprawling acres. This family winery sits atop picturesque vineyards and offers 19 different award-winning wines for sale in the gift shop. Also find for sale non-alcoholic grape juices, homemade jellies, jams and many wine-related gifts and novelties. Fee for wine tastings. Call for hours.



Lazy O Farm 919-934-1132
3583 Packing Plant Rd., Smithfield

Enjoy farm animals, hayrides, picnic areas and seasonal activities that include a maze & pumpkin patch, egg hunts, ice cream and butter making, and Christmas activities. Visits are by appointment only and for groups of 10 or more. Call for directions.

Middle Creek Miniatures 919-934-9539
6550 NC Hwy 210 W., Smithfield | www.middlecreekminiatures.com

Visitors are welcome on a call ahead appointment basis only. Farm is involved in showing, breeding, training and driving miniature horses.

Smithfield Ham Shop/ Johnston County Hams 919-934-8054
204 N. Bright Leaf Blvd., Smithfield | www.countrycuredhams.com

Country hams, bacon, spiral sliced honey hams and other Johnston County and Goodness Grows in NC products.

Smith's Nursery and Strawberry Farm 919-934-1700
443 Sanders Rd., Benson | www.smiths-nursery.com

Nursery open year round. Strawberry season April-June (u-pick/pre-picked), blackberry & blueberry season June-July (u-pick/pre-picked), seasonal garden center open April-July and September-October, pumpkins & mums September-October with hayrides & millet maze.

Triple S Ranch 919-202-4991
533 Barnes Lake Rd., Middlesex | www.sssranch.com

Gaining knowledge through farm fun, gardens, hay maze, train ride, horse shoes, rare animals, trails, bird watching, fishing, with area for cook outs. Call for appointment and directions.

Amusements

Carolina High Hot Air Balloon Company 919-894-5893
1730 Allen's Crossroads Rd., Four Oaks | www.flycarolinahigh.com

Enjoy the tranquil and picturesque scenery of beautiful Johnston County, floating gently above the countryside in the hot air balloon "Spellbound Spirit".

Dunn-Benson Dragstrip 919-894-4870
555 Dragstrip Rd., Benson

One-eighth mile asphalt/concrete pad dragstrip located on Dragstrip Road in Benson. Saturday races (weather permitting). Track #: 919-894-1662

Howell Theatre 919-934-8202
141 S. Third St., Smithfield | www.howellmovies.com

Every Movie, Everyday, Everybody \$3.00. Step back in time at this nostalgic four screen theatre built in the 1930's.



Interskate of Clayton **919-359-2252**

131 Guy Rd., Clayton | www.interskaterollerskating.com

Roller skating rink with arcade, offering special program and available for rentals.

Jacob's Jump 'n' Fun **NC-27520**

8928 Bus. Hwy 70 W., Clayton | www.jacobsjumpnfun.com

Families play together on extra sturdy jump houses, obstacle courses, and slides.

Pottery Camp **919-550-3861**

12981 US Hwy 70, Clayton | www.potterycomp.com

Pottery Camp is a fun, relaxing place to create something special for yourself or another. With our pottery, our paint and your imagination, you're sure to have a master piece!

Rainbow Lanes Family Fun Center **919-553-4386**

850 NC Hwy 42 W., Clayton | www.rainbowlanesclayton.com

More than a bowling alley, this family fun center also includes billiards, arcade, meeting rooms and restaurant.

Smithfield Cinemas **919-934-5300**

175 S. Equity Dr., Smithfield | www.dtmovies.com

Ten screen cinema featuring stadium seating, digital sound, wall-to-wall screens and a game room.

TAG UR IT **919-209-0851**

505 S. Bright Leaf Blvd., Smithfield | www.bbcmusements.com/index.html

A complete family fun center for all ages, offering laser tag, bounce houses, slides, obstacle courses, mini golf, a complete arcade with pool, air hockey, foosball, basketball hoops, and a variety of video games.

Art Galleries

Barbara A. Keen Studio **919-963-3190**

309 N. Main St., Four Oaks

Visit the fine arts studio of artist Barbara Keen, specializing in stained glass and original paintings.

Eye of the Eagle Art **919-585-2461**

131 E. First St., Clayton | www.eyeoftheeagleart.com

Art center and galley featuring original art and fine crafts created by local artists.

Frank Creech Art Gallery **919-934-3051**

245 College Rd., Smithfield | www.johnstoncc.edu

Dedicated to local artist Frank Creech, this gallery at Johnston Community College rotates local artist exhibits and is open to the public.



G.O. Design **919-553-6188**

322 Medlin Rd., Clayton | www.gailoneildesign.com

Bright, colorful still life and unique abstracts characterize the oils, acrylics and mixed media work of Gail O'Neil. Studio tours available upon request.

Right Angles Framing & Art **919-553-2486**

401 E. Main St., Ste. 105, Clayton | www.janetsartshop.com

Frame your art and buy from local Johnston County artists.

River City Arts **919-601-3131**

310 E. Johnston St., Smithfield | www.myspace.com/rivercityarts

Artist exhibits, events and micro cinema. Call for times.

Day Spas

Botanicals Salon & Spa **919-553-1293**

12450 Cleveland School Rd., Garner | www.botanicals2.com

My Girlfriends Place **919-524-5859**

115 E. First St., Clayton | www.mygirlfriendsplace-glamourstudio.com

Spa Neo Clayton **919-550-9355**

501 Gateway Dr., Suite 104, Clayton | www.spaneooclayton.com

Offering massage and skin care. Also offering GloMinerals and Rx Systems.

The Dupree House Salon & Day Spa **919-934-8805**

709 S. Third St., Smithfield | www.thedupreehouse.net

Offers manicures, pedicures, facials, body wraps, Eminence hair and wax services, mineral cosmetics, and organic skin care products.



History & Heritage

Ava Gardner Museum **919-934-5830**

325 E. Market St., Smithfield | www.avagardner.org

The Ava Gardner Museum is home to an incredible collection including scripts, photos, costumes, and personal effects of screen legend Ava Gardner. Experience her rise from a local country girl to one of Hollywood's film goddesses. Born near Smithfield, Ava's friends and co-stars included Mickey Rooney, Clark Gable, Frank Sinatra and Gregory Peck. Ava Gardner's grave site is located at nearby Sunset Memorial Gardens. Admission.

Benson Museum of Local History **919-894-1266**

104 W. Main St., Benson | www.townofbenson.com

The Benson Museum of Local History was established in 1987 to collect, preserve, and display items of historical significance related to the Benson community. Retrace Benson's roots with a collection of railroad memorabilia, antiques, quilts, farming and hardware artifacts. Free.

Bentonville Battlefield

State Historic Site **910-594-0789**

5466 Harper House Rd., Four Oaks | www.nchistoricsites.org/bentonvi/

The Battle of Bentonville, fought March 19-21, 1865, was the last full-scale action of the Civil War in which a Confederate army was able to mount a tactical offensive. This major battle, the largest ever fought in North Carolina, was the only significant attempt to defeat the large Union army of Gen. William T. Sherman during its march through the Carolinas in the spring of 1865. Tour the nearby Harper House, which served as a makeshift hospital, four driving pull-offs, confederate cemetery and union earthworks trails. The museum displays and interprets many artifacts from the three-day battle. Free.

Blue Gray Scenic Byway

Four Oaks | www.byways.org/explore/byways/12843/travel.html

Begin the winding byway at I-95, Exit 90 on US 701 South, take left turn on Devils Racetrack Road, trail ends at the Harper House at Bentonville Battlefield State Historic Site. Scenic Byway follows the path of General Sherman as he marched from Bentonville to Goldsboro after the battle of March 1865.

Boyette Slave and Schoolhouse **919-284-2911**

NC Hwy 222, Glendale Rd., Kenly

Listed in the National Registry of Historic Places, this unique mud and stick chimney makes this a historical landmark that everyone must see. It is a one-room log house of hand-hewn planks held together by full dove-tail notches and pegs.

Camp Flintlock **919-938-1776**

1580 King Mill Rd., Four Oaks | www.campflintlock.com

Travel back in time when our nation was born. School groups, scouts and other organizations choose from a variety of Colonial American Programs offered throughout the year. Residential Camp is also offered during the summer with separate sessions for boys and girls.

Coats Museum, Bell Tower and House **919-894-4443**

Coats Estate, 3317 Old Fairground Rd., Angier

Preserves the collection of textiles, books, farm equipment, and artifacts depicting rural farm living on the Coats farmstead. Of special interest is a bell tower of over 60 bells of various sizes. Special tours available, open by appointment only.

Hastings House c. 1854 **919-934-0887**

200 S. Front St., Smithfield | www.downtownsmithfield.com

Built in 1854 for William Hastings, it is one of the two oldest homes in Smithfield. The Hastings House served as pre-battle command office for General Joseph E. Johnston, Commander of the Confederate troops that marched to stop General Sherman at the Battle of Bentonville, March 19-21, 1865.

Johnston County Heritage Center **919-934-2836**

241 E. Market St., Smithfield | www.johnstonnc.com/heritage

The Johnston County Heritage Center has become known as one of the best equipped facilities in the country for studying local history and genealogy. An extensive collection of public records, manuscripts, family histories, photographs, vintage newspapers, and artifacts have been assembled to allow scholars, amateur historians, genealogists and students to research the history and culture of Johnston County and its people.

Kenly Area Historical Society **919-284-3591**

105 W. Second St., Kenly

Museum on Kenly's history, its people, buildings and homes.

Selma Historic Union Station/ NC AMTRAK **919-965-6971**

500 Railroad St., Selma | www.bytrain.org/passenger/citystops/selma.html

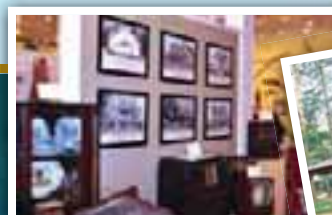
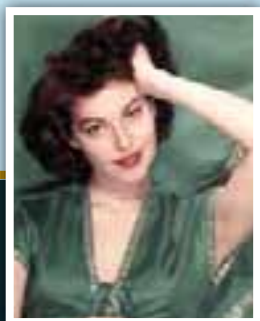
This 1924 station has been completely restored and displays exhibits and memorabilia on rail history and the Town of Selma.

Smithfield High School

History Room - A.G. Glenn Building **919-934-4361**

501 S. Second St., Smithfield

The 1913 building showcases school memorabilia from 1903-1969. One special exhibit honors SHS boys who lost their lives while serving in the armed forces. Open Mon-Fri 8am-4pm.



Tobacco Farm Life Museum 919-284-3431
709 N. Church St. - US Hwy 301 N., Kenly | www.tobaccofarmlifemuseum.org

A 6,000 sq. foot exhibit gallery displays artifacts from all aspects of farm life, along with a hands-on children's exhibit, household goods, musical instruments, clothing, and agricultural tools. A restored farmstead, with main house, detached kitchen, smoke house, tobacco barn, blacksmith/multipurpose shop, 1890's one room school house and reproduction pack house depicts rural life as it was during the Great Depression era. The gift shop offers souvenirs and hand-crafted items.

Performing Arts

American Music Jubilee/Rudy Theatre 877-843-7839
300 N. Raiford St., Selma | www.amjubilee.com

This Branson-style production entertains visitors and groups from New York to Miami with musical delights from '50's rock 'n' roll to classic and contemporary country, gospel and a stirring patriotic tribute. The popular Christmas show starts early November and runs through the week of Christmas. Admission charges for adults and children. Group discounts available (20 or more).

The Clayton Center 919-553-3152
111 E. Second St., Clayton | www.theclaytoncenter.com

A 600-seat performing arts center has superb acoustic quality and provides an intimate environment for nationally touring artists. 12,480 square feet of meeting and reception space for groups of 20 to 450. Call for performance schedule, ticket availability, or to rent the space.

Neuse Little Theatre 919-934-1873
209 S. Front St., Smithfield | www.neuselittletheatre.org

Neuse Little Theatre has been a vital part of the cultural heritage in Smithfield since 1974, bringing such shows as Wizard of Oz, To Kill A Mockingbird, and Arsenic & Old Lace to Smithfield. Call for performance schedule. Admission.

Paul A. Johnston Auditorium 919-209-2099
245 College Rd., Smithfield | www.jccperformingarts.com

Located on the campus of Johnston Community College, the facility includes a 1,000-seat performing arts auditorium, library and learning resource center. Enjoy the Performing Arts Concert series, Johnston County Chorale and the Country Music Showcase throughout the year. Admission.

W. J. Barefoot Auditorium 919-894-5117
303 E. Church St., Benson | www.townofbenson.com

Home to the Benson Little Theatre, the W.J. Barefoot Auditorium offers a 330-seat performing arts auditorium perfect for concerts, assemblies, pageants, and theatrical productions. Available for public and private rental.

Nature Sites & Outdoor Activities

Arboretum at JCC 919-209-2052
1240 E. Market St., Smithfield | www.johnstoncc.edu/arboretum

The Arboretum at Johnston Community College promotes prudent and responsible use of cultivated plants and to promote the conservation of native species through the acquisition, evaluation and aesthetic display of selected plant materials.

Benson Singing Grove 919-894-5117
406 East Main St., Benson | www.townofbenson.com

Home to the annual Benson Mule Days and the Benson Singing Convention. To book the park and picnic shelter for concerts or family reunions call Benson Parks & Recreation.

Buffalo Creek Greenway 919-934-2148
600 Booker Dairy Rd., Smithfield | www.visitsmithfield.org

Trail entrance located at the back of Smithfield Community Park, this 3.5 mile greenway travels along the Spring Branch to the Neuse River Walk at Smithfield Commons.

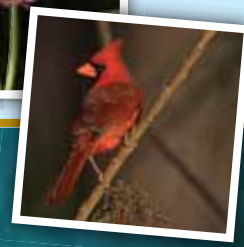
Clemmons Educational State Forest 919-553-5651
2411 Old US 70 W., Clayton | www.ncesf.org/CESF/home.htm

Clemmons Forest offers a mix of pine and hardwood vegetation and a pleasant rolling terrain highlighted by streams and rock outcroppings. These features are made accessible by a series of well marked trails, accented by exhibits and displays about the ecology of a managed forest. A fascinating feature, especially to children is a selection of talking trees and rocks. Call for hours.

Flower Hill 919-833-3662
NC Hwy 231 North & Flower Hill Rd., Middlesex | www.triangleland.org

Flower Hill is a 10 acre nature preserve owned and managed by Triangle Land conservancy to protect rare populations of rhododendron, galax, and other montane plants. Trails are open to visitors year-round. Early May is typically when the magnificent pink Catawba rhododendron blooms sparkle.

Hatcher Bridge Tree Farm 919-603-8578
2810 Shoe Heel Rd., Kenly | www.hatchersbridge.com
120 acre tree farm that is used as an environmental education center. By appointment only. Seasonal, closed November to April.



Howell Woods

Environmental Learning Center **919-938-0115**

6601 Devil's Racetrack Rd., Four Oaks | www.howellwoods.org

Howell Woods offers over 2,800 acres and 25 miles of unpaved roads and trails for small group horseback riding, mountain biking, bird watching, long-distance hiking, no-trace camping and fishing. Containing diverse flora and fauna. The site includes an exhibit hall, amphitheatre and natural resources library available for use by the public. Reservations are required for horseback riding, camping and fishing.

Langdon's Fishing **919-772-4122**

664 Cornwallis Rd., Cleveland Township

Two ponds available for fishing. \$2.00 per day per person.

Legend Park - Mountain Bike Trail **919-553-1550**

550 City Rd., Clayton | www.townofclaytonnc.com

From beginner to advanced riders, this eight-mile bike trail offers rock gardens, boulders, jumps, and bridges. Trails are multi-directional. Free. Call for directions.

Neuse Adventures

Canoe & Kayak Rentals **919-553-3295**

2975 Covered Bridge Rd., Clayton | www.neuseadventures.com

Canoe trips at 9am and 1pm weekends or 6-8pm weekdays, during the summer. Groups of 16-20 people welcome.

Neuse River Walk at

Smithfield Town Commons **919-934-2148**

200 S. Front St., Smithfield | www.smithfield-nc.com

Take a stroll along the Neuse River Walk in historic Smithfield's Town Commons. Watch nature, go fishing, or picnic along the river. Boat ramp located at end of Front St.

Powell's Gardens **919-936-4421**

9468 US Hwy 70 E., Princeton

Enjoy a vast selection of Irises (late April-early May), Hostas (mid April-frost) and Day Lilies (late June-July). Open year round. Loleta Powell has been a gardener for over 75 years and has introduced original garden plants. Meredith Hues is the official flower for Meredith College. Free.

Richardson's Bridge **919-707-0080**

SR 1201 off of Brogden Rd., Brogden Community | www.ncwildlife.org

Located off SR 1201 off of Brogden Road, about 15 miles southeast of Smithfield turn right on Richardson's Bridge Rd., boat ramp is 3 miles on the right.

River Town Outfitters **919-934-4088**

134 S. Third St., Smithfield | www.rivertownoutfitters.com

Living in and loving the great outdoors in beautiful eastern North Carolina! Canoes, kayaks and bike rentals located at the Buffalo Creek Greenway on the Neuse River.



Tucker Lake **919-894-6090**

3025 Allen's Crossroads Rd., Benson | www.tuckerslake.com

Enjoy swimming, waterslide, picnic area. Admission charged. Open from Memorial Day weekend - Labor Day weekend.

Sports Facilities

All-Star Park - Clayton **919-553-1550**

400 Front St., Clayton | www.townofclaytonnc.org

Playground equipment, basketball court, pavillion/restroom.

Benson Parks & Recreation

Department/Benson Municipal Park **919-894-5117**

1204 N. Johnston St., Benson | www.townofbenison.com

Youth baseball field (1), youth/adult softball field (1), batting cage, sand volleyball court, horseshoe pits (8), tennis courts (2), shuffleboard courts (4), picnic shelter with 2 grills, playground for children ages 2-12.

Clayton Community Park **919-553-1550**

1075 Amelia Church Rd., Clayton | www.townofclaytonnc.org

43 acre park that hosts numerous regional girls softball tournaments, Special Olympics, Regional Bocce Qualifiers and site of the annual NC Senior Games State Finals in mid-October in Bocce. Park amenities also include two playgrounds, picnic shelters, six tennis courts, two sand volleyball courts and walking trails.

Clayton Municipal Park **919-5531550**

Stallings St., Clayton | www.townofclaytonnc.org

Ball field, basketball court, tennis court, picnic shelter, fenced in playground.

Clayton Parks & Recreation

Department / Clayton Community Center **919-553-1550**

715 Amelia Church Rd., Clayton | www.townofclaytonnc.org

Facility includes a regulation size gym, elevated walking track, art and pottery and multipurpose activity room. Offices of Parks & Recreation are located at the center.

Kenly Area Parks And Recreation Center **919-284-9667**

406 S. College St., Kenly

This facility includes four ball fields, a soccer complex, two tennis courts, two batting cages, gymnasium and a half mile paved walking trail.



Mitchell Nance Athletic Complex 919-894-5117

300 N. Lee St., Benson | www.townofbenson.com

Lighted softball field and 2 soccer fields with restroom facilities and concession stand. Playground for children 2-12 and picnic shelter with grills.

Monster Indoor Batting Cages 919-585-4990

320 W. Main St., Clayton | www.monsterbattingcages.com

A brand new indoor batting facility with top of the line cage netting, machines and interior design. New baseball and softball equipment, apparel and uniforms.

Real McCoy Paintball 919-936-2025

1947-H Progressive Church Rd., Princeton | www.mccoypaintball.com

Fast action paintball fun on three fields: Hyperball, Xball and Woods.

Sam Godwin Recreation Park 919-965-2284

US 70-A Hwy, Pine Level | www.pinelevel.org

Four lighted baseball/softball fields, basketball court, soccer field, community park, concession, restrooms, picnic tables.

Selma Parks & Recreation

Department/Brack Wilson Park 919-975-1411

305 N. Pollock St., Selma | www.selma-nc.com

Sports Facilities: Baseball - 2 adult fields, 2 little league fields. Football/Soccer - 1 football/soccer, 1 youth soccer. Tennis - 2 courts. Basketball - 1 gym, 2 school gyms.

Sluggers 919-989-3000

9180 Cleveland School Rd., Clayton

Seven-stall batting cage, pitching cages and half-sized baseball field. 3,500 sq. feet building with space for private parties and arcade games.

Smithfield Parks & Recreation Department/Smithfield

Community Park 919-934-2148

600 Booker Dairy Rd., Smithfield | www.smithfield-nc.com

Sports Facilities: Baseball - 3 adult fields, 3 softball fields, 1 little league. Football/Soccer - 1 football/soccer, 1 adult soccer, 4 youth soccer. Tennis - 4 courts. Basketball - 2 outdoor courts.

Smithfield Recreation and Aquatics Center 919-934-1408

600 Booker Dairy Rd., Smithfield | www.sraonline.com

Enjoy 8-lane swimming pool, gymnasium, walking track, racquetball courts, fitness room and banquet room.

Golf

Cardinal Country Club 919-284-3647

363 Parrish Memorial Rd., Selma

A semi-private facility featuring tall pines, canals, ponds and bunkers to create a challenging course. The signature hole is #18, a 580-yard, par 5, with a dogleg left fairway.

Country Club of Johnston County 919-934-4166

694 Country Club Rd., Smithfield | www.ccjohnstoncounty.com

18 hole, 6800 yard course designed by Ellis Maples and home to PGA touring pro Neal Lancaster.

Pine Hollow Golf Club 919-553-4554

3300 E. Garner Rd., Clayton | www.pinehollowgolf.com

18 holes-419 Bermuda fairways with Crenshaw bentgrass greens. Renovated summer of 2001, redesigned by Bob Moore. Driving range, practice green and pro shop.

Reedy Creek Golf Course 919-934-7502

585 Reedy Creek Rd., Four Oaks | www.reedycreekgolf.com

Designed by Gene Hamm, this 18-hole, par 72 course is built upon rolling farmland. It has been consistently rated as one of eastern North Carolina's top-rated public courses and is annually recognized as one of Golf Digest's "Places to Play."

Riverwood Golf & Athletic Club 919-550-1919

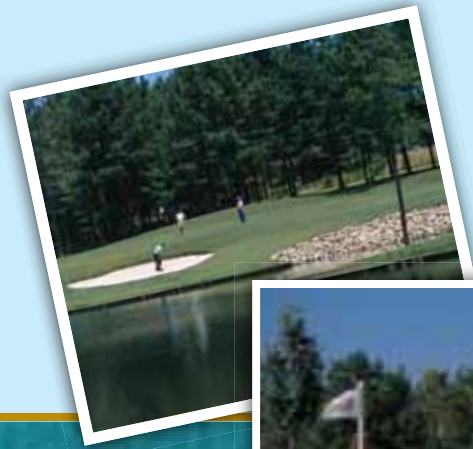
400 Riverwood Dr., Clayton | www.fredsmithcompany.com

A 27-hole, tournament caliber golf facility designed by David Postlewait along terrain of the Neuse River. Features 7,200 yards of fairways and bent grass greens.

The Neuse Golf Club 919-550-0550

918 Birkdale Dr., Clayton | www.neusegolf.com

Designed by John LaFoy, this course is ranked first by Golf Digest as "value for the money" and fifth for golf course condition in North Carolina. Full food service on premises for breakfast and lunch.



Places to shop

Antiques & Flea Markets

AntiqueWish **919-202-4900**

110 W. Anderson St., Selma | www.antiquewish-online.com

As Good as New **919-207-9959**

208 E. Main St., Benson

Benson Flea Market & Antiques **919-207-2222**

10 J. Lee Rd., Benson

Bishop's Emporium **919-965-7299**

109 N. Raiford St, Selma | www.antiquesselma.com/dealers.htm

Brightleaf Flea Market **919-934-4111**

2320 S. Bright Leaf Blvd., Smithfield | www.brightleafleamarket.com

Four Oaks Auction Gallery **919-963-3482**

102 S. Main St., Four Oaks | www.4oaksauction.com

G & L Auctions **919-202-8115**

1525 Fire Tower Rd., Selma | www.glauction.com

Harper's Flea Market Mall **919-989-7280**

1410 S. Bright Leaf Blvd., Smithfield

His 'n Hers Antiques **919-202-8007**

126 S. Raiford St., Selma

Keepsake Corner **919-975-0407**

110 N. Raiford St., Selma | www.keepsake-corner.com

Korner Flea Market **919-701-1065**

301 S. Wall St., Benson

Precious Memories Antiques
and Collectibles, Inc. **919-202-4777**

117 S. Raiford St., Selma

Railroad Street Antiques & Collectibles **919-965-9659**

107 E. Railroad St., Selma | www.rrstantiques.com

Reid's Country Sampler **919-965-7299**

109 N. Raiford St., Selma | reidsantiqueselma.blogspot.com

Selma Cotton Mill Antique Flea Market **919-202-0794**

1105 W. Anderson St., Selma | www.selmanc.info/cotton.htm

Treasury Antiques **919-965-5335**

100 S. Raiford St., Selma | www.selmanc.info/treasury.htm

TWM Antique Mall **919-965-6699**

112 S. Pollock St., Selma | www.twmsantiquemall.com

Visual Pleasure Antiques **919-965-0030**

107 S. Raiford St., Selma

Book Stores

Orchard House Booksellers & Coffee Shop **919-938-1511**

111 N. Third St., Smithfield | www.orchardhousebooksellers.com

Pauper's Books & More **919-550-2777**

11801 US Hwy 70 W., Clayton | www.paupersbooks.com

NC Paper Company **919-553-3313**

114 W. Main St., Clayton

Clothing & Shoe Stores

Burke's Outlet **919-209-0521**

1229 N. Bright Leaf Blvd., Smithfield | www.burkesoutlet.com

Carolina Bridal World **919-989-8787**

230 Venture Dr., Smithfield | www.carolinabridalworld.com

Cleo's Closet **919-915-3311**

202 N. Main St., Four Oaks

Hudson Belk **919-934-5196 ext 201**

1231 N. Bright Leaf Blvd., Smithfield | www.belk.com



Jewel's Formals **919-934-4943**
101 S. Third St., Smithfield | www.jewelsformals.com

Katie Mac's Children Boutique **919-661-2993**
7277 NC Hwy 42 W., Raleigh

Sweet Pea Children's Boutique **919-989-5874**
259 Venture Dr., Smithfield

Locally Produced Food Products

Anna's Fresh Garden Salsa
PO Box 280, Benson | www.annasfreshgardensalsa.com

Atkinson Milling Company **800-948-5707**
95 Atkinson Mill Rd., Selma | www.atkinsonmilling.com

Carolina Packers, Inc. **919-934-2181**
2999 S. Bright Leaf Blvd., Smithfield | www.carolinapackers.com

Ginny O's **919-782-5302**
106 Railroad St., Selma | www.cheeserings.com

House-Autry Mills **919-963-6200**
7000 US Hwy 301 S., Four Oaks | www.house-autry.com

Kepley's Sauce Company **919-553-7047**
3366 Barber Mill Rd., Clayton

Smithfield Ham Shop/ Johnston County Hams **919-934-8054**
204 N. Bright Leaf Blvd., Smithfield | www.countrycuredhams.com

Stevens Sausage Company **919-934-3159**
3411 Stevens Sausage Rd., Smithfield | www.stevens-sausage.com

Farm Markets and Stands

701 Farm Market **919-989-7336**
2989 US Hwy 701 S., Four Oaks | www.701farmmarket.com

B & B Produce, Inc. **919-894-1803**
2778 NC Hwy 50 S., Benson



Barham Farms **919-365-4401**
10440 Covered Bridge Rd., Zebulon | www.barhamstomatoes.com/default.asp

Beasley's Berries **919-553-6928**
428 Peele Rd., Clayton

Benson Seafood & Produce Market **919-207-0409**
105 W. Parrish Dr., Benson

Brook Hill Farms - Langdon G M Farms **919-894-4796**
5098 Zack's Mill Rd., Angier

Clayton Farm and Community Market **919-965-9969**
439 E. Main St., Clayton | www.clayton-farmers-market.org

Hannah Creek Farms **919-934-3801**
985 Stewart Rd., Four Oaks

Herring Farms **919-965-5889**
3127 US Hwy 301 N., Selma

J. Roland Wood Farms **919-894-2318**
2500 Beasley Rd., Benson

Jan's Strawberries & Hill's
Peach and Berry Farm **919-934-2989**
3188 Stevens Sausage Rd., Smithfield

L & G Farm Stand **919-553-3525**
10236 Cleveland Rd., Clayton

Lee Farms **919-963-6071**
2775 Hockaday Rd., Four Oaks

Lee's Produce **919-550-8425**
401 W. Main St., Clayton | www.leesgardenctr.com

Mitchell's Pumpkin Corner **919-291-0279**
2367 Gordon Rd., Clayton



Farm Markets and Stands (cont)

Northlake Christmas Trees & Nursery **919-894-3524**
7326 Meadowbrook Rd., Benson | www.northlakechristmastreenursery.com

Papa Joe's Organics **919-689-9825**
513 S. Bentonville Rd., Four Oaks

Smithfield Farmers Market **919-934-2148**
350 East Market St., Smithfield | www.smithfield-nc.com/farmersmarket

Smith's Nursery and Strawberry Farm **919-934-1700**
443 Sanders Rd., Benson | www.smiths-nursery.com

Taylor Family Organics **919-508-7450**
1718 Powhatan Rd., Clayton | www.taylorfamilyorganics.com

Thompson's Peach Orchard **919-934-8434**
US Hwy 701 S., Four Oaks | www.thompsonorchard.com

Triple "P" Farms **919-550-5169**
104 Jacobs Ct., Clayton

Other Local Farm Products

Arrowhead Farm Dairy **919-965-9306**
2765 Little Divine Rd., Selma | www.arrowheadfarmdairygoats.com

Blue Dragonfly Cut Flower Farm **919-553-5221**
6018 Little Creek Church Rd., Clayton | www.bluedragonflyflowers.com

Heelside Farms **919-934-2427**
508 Sedgewood Rd., Four Oaks | www.heelsidefarms.com

McLamb's Abattoir **919-894-2587**
623 Benson-Hardee Rd., Benson

Melrose's Farm **919-632-0212**
3200 Brogden Rd., Smithfield | <http://www.localharvest.org/melroses-farm-M40643>

Mountain Branch Farm **919-553-2672**
1660 Cornwallis Rd., Garner

Shamrock's Buzzy Bee **919-247-6852**
PO Box 308, Four Oaks | www.shamrocksbuzzybee.com

Toad Song Farm **919-553-2992**
14765-D Buffalo Rd., Clayton | www.toadsongfarm.com

Furniture Stores

Badcock Home Furniture and More **919-661-9355**
38 S. Park Dr., Garner | www.badcock.com/store/index.jsp

Circa **910-280-2709**
427 E. Main St., Clayton | www.circaofclayton.com

Elmore Furniture **919-553-6294**
225 E. Main St., Clayton | www.elmorefurnitureco.com

Four Oaks Interiors **919-963-6669**
100 S. Main St., Four Oaks

Gallery Furniture Inc. **919-989-1085**
721 N. Bright Leaf Blvd., Smithfield | www.galleryfurnitureinc.com

Heavner Furniture Market **919-934-0551**
1701 W. Market St., Smithfield | www.nc-furniture-market.com

Pine Level Hardware and
Furniture Co., Inc. **919-965-8961**
219 N. Peedin Ave., Pine Level | www.pinelevelfurniture.com

Tucker Furniture **919-934-1203**
501 E. Market St., Smithfield

Garden Centers/Agri-Supply

DeWayne's **919-202-8471**
1575 Industrial Park Dr., Selma | www.dewaynes.com



Donnie's Farm & Garden Supply 919-209-9811
1701 S. Bright Leaf Blvd., Smithfield | www.donniesfarmandgarden.com

Mule City Specialty Feeds 919-894-3626
1202 N. Wall St., Benson | www.mulecity.com

Tractor Supply Co. 919-965-6762
1401 S. Pollock St., Selma | www.tractorsupply.com

General Stores

Austin General Store 919-963-2160
107 N. Main St., Four Oaks

Calamity Jane's General Store 919-209-4443
5368 Wilson's Mills Rd., Clayton | www.calamityjaneswesternstore.com

Dr. Wells Cleveland Emporium 919-934-4898
9005 Cleveland Rd., Clayton

McLaurin's General Store 919-207-0480
201 E. Main St., Benson

Ronnie's Country Store 919-989-3045
280 US Hwy 701 S., Four Oaks

Gifts and Jewelry Stores

Anna Kate's Monogramming & Gifts 919-938-9520
1004 S. Bright Leaf Blvd., Smithfield

Cindale Beads 919-934-2900
150-B S. Equity Dr., Smithfield | www.cindale.com

Crossroads Jewelers 919-209-5210
12330 NC Hwy 210 N., Benson

DeWayne's 919-202-8471
1575 Industrial Park Dr., Selma | www.dewaynes.com

E.A. Johnson Jewelers 919-894-4359
112 W. Main St., Benson

Edmond's/Libby's Gifts 919-894-3272
115 E. Main St., Benson

Evans Jewelers 919-938-2929
103 S. Third St., Smithfield

Fine Jewelry by Vincent 919-550-2396
335 E. Main St., Clayton

Four Seasons Florist & Interiors 919-894-8001
119 E. Main St., Benson | www.fourseasonsnc.com

GoldCraft Engraving 919-989-0196
230 E. Market St., Smithfield

Jennifer's Hallmark 919-938-3446
1261 N. Bright Leaf Blvd., Smithfield

Jewelry Design Studio 919-359-3649
417 E. Main St., Clayton | www.jewelerjohnstudio.com

Jordan's Jewelry Design & Repair 919-773-8940
5580 NC Hwy 42 W., Garner | www.jordansjewelrydesign.com

Just Gifts 919-936-2054
9577 US Hwy 70 E., Princeton

Main Street Jewelers 919-553-0803
236 E. Main St., Clayton

Purses Unlimited 919-550-1021
420 E. Main St., Clayton

Randy's Western Gold 919-701-1152
701 S. Wall St., Benson | www.randyswesterngold.com

Selma Jewelry & Music Company 919-965-8582
108 N. Raiford St., Selma

The Jewel Box 919-934-2500
1699 Booker Dairy Rd., Smithfield

Two Henrys Beadery 919-965-3105
103 E. Anderson St., Selma | www.antiquesselma.com/dealers.htm



Music & Electronic Stores

CD Warehouse **919-934-5931**
150-D S. Equity Dr., Smithfield | www.cdwarehouse.com/stores.html

J-DAWGS Music **919-207-3777**
118 E. Main St., Benson

RedPhish Music **919-209-0827**
1243 N. Bright Leaf Blvd., Smithfield

Sound Station & Security Inc. **919-989-3106**
713 E. Market St., Smithfield | www.soundstationsecurity.net

Tarheel Music **919-989-1805**
134 S. Third St., Smithfield | www.tarheelmusic.com

Other Major Retail

Big Lots **919-202-8142**
1403 South Pollock St., Selma | www.biglots.com

K-Mart **919-934-9151**
950 W. Market St., Smithfield | www.kmart.com

Rose's **919-989-7921**
851 W. Market St., Smithfield

Sears **919-553-5133**
8878 US Hwy 70 Bus. W., Clayton | www.sears.com

Wal-Mart Super Center **919-550-5600**
805 Town Center Blvd., Clayton | www.walmart.com

Wal-Mart Super Center **919-989-6455**
1299 N. Bright Leaf Blvd., Smithfield | www.walmart.com

Wal-Mart Supercenter Store **919-772-7373**
5141 NC Hwy 42, Garner | www.walmart.com

Outlet Shopping

Carolina Apparel **919-202-0777**
Queens Square Outlets, 49 JR Rd., Selma | www.carolinaapparel.com

Carolina Premium Outlets **919-989-8757**
1025 Industrial Park Dr., Smithfield | www.premiumoutlets.com/carolina

JR Discount Outlets **919-965-5055**
I-95, Exit 97, 67 JR Rd., Selma | www.jrselma.com

Red River Western Wear **919-965-3337**
49-C JR Rd., Selma | www.redriverwestern.com

SAS Shoes **919-989-6190**
255-A Equity Dr., Smithfield | www.sasshoes.com

Soffe - Factory Outlet Store **919-965-0062**
49-F JR Rd., Selma | www.soffe.com

Specialty Shops

Coastal Chairs, Inc. **919-868-3882**
4030 Lassiter Rd., Four Oaks | www.coastalchairs.com

Creighton Manor Interiors & Consignments **919-553-7959**
50 Neuse River Pkwy., Clayton | www.creightonmanor.com

Curtain Calls **919-915-0448**
826 N. Bright Leaf Blvd., Smithfield | www.curtaincallsbypeggy.com

Herbal Wellspring Herb Shop **919-938-0336**
331 E. Market St., Smithfield | www.herbalwellspring.com

Memory Lane Frame Studio **919-938-2900**
307 S. Third St., Smithfield

Wild Birds Unlimited **919-553-7973**
476 Shotwell Rd., Clayton | www.wbu.com/clayton

Sports Apparel, Equipment, Vehicles

Barefoot Outdoors **919-989-0088**
603 S. Bright Leaf Blvd., Smithfield

Hibbett Sports **919-934-2654**
1239 N. Bright Leaf Blvd., Smithfield | www.hibbett.com



Neuse Bait & Sporting Goods **919-938-6171**
2838 S. Bright Leaf Blvd., Smithfield

Outdoor Accessories Unlimited **919-284-1164**
106 W. Second St., Kenly

Shelton's Harley-Davidson Mall Store **919-938-1592**
1043 Industrial Park Dr., Smithfield | www.sheltonshd.com

Springhill Outfitters **919-284-0077**
773 Seafood House Rd., Selma | www.springhilloutfitters.com

Team Powersports **919-865-3240**
721 Venture Dr., Smithfield | www.team-powersports.com

Thrift Shops

Cheap Thrills Thrift Shop **919-965-4740**
103 N. Raiford St., Selma

Pink Flamingo Thrift & Gift **919-550-0166**
417 E. Second St., Clayton

Seven Sisters Thrift Shop **919-894-6060**
107 E. Main St., Benson

Pizazz **919-550-1915**
132 E. Main St., Clayton | www.harborshelter.org/pizazz.html

Pizazz **919-989-9359**
119 N. Third St., Smithfield | www.harborshelter.org/pizazz.html

Tobacco Products

Bec's Accessories **919-989-9458**
211 Mallard Rd., Smithfield | www.cigarettetobacco.com

Smoker Friendly **919-773-0300**
5568 NC Hwy 42 W., Garner

JR Discount Outlets **919-965-5055**
I-95, Exit 97, 67 JR Rd., Selma | www.jrselma.com



Sweet Treats

Benson

Crossroads Coffee **919-701-1700**
102 W. Parrish Dr., Benson | www.crossroadsbenson.com

Jenny's Sweet Creations **919-207-0381**
221 E. Main St., Benson

The Donut Shoppe **919-894-5487**
203-B Dunn St., Benson

Warren Drug Company, Inc. **919-894-4651**
209 E. Main St., Benson

Clayton

Dunkin' Donuts/Baskin Robbins **919-359-8464**
770 Enterprise Dr., Clayton | www.dunkindonuts.com

Mimmzi's Ice Cream and More **919-550-7483**
431 Athletic Club Blvd., Clayton

Pelican's SnoBalls **919-696-0547**
10382 US Hwy 70 W., Clayton | www.pelicansnoballs.com

Sherry's Signature Cheesecakes **919-270-0513**
115 First St., Clayton | www.signaturecheesecakes.com

Starbucks Coffee Co. **919-359-0690**
13024 US Hwy 70 W., Clayton | www.starbucks.com

Four Oaks

Dunkin' Donuts **919-963-2094**
6127 US Hwy 301 S., Four Oaks | www.dunkindonuts.com

Selma

Creech Drug Company **919-965-2316**
126 N. Raiford St., Selma | www.antiquesselma.com/creech.htm

Smithfield

Cold Stone Creamery **919-938-1300**
150 S. Equity Dr., Ste. A, Smithfield | www.coldstonecreamery.com

Dunkin Donuts **919-934-1058**
1669 E. Market St., Smithfield | www.dunkindonuts.com

Hills of Snow Snowballs **919-965-6060**
110 S. Bright Leaf Blvd., Smithfield

Orchard House Booksellers
& Coffee Shop **919-938-1511**
111 N. Third St., Smithfield | www.orchardhousebooksellers.com



Places to eat

Benson

Burger King
700 E. Church St.
919-894-8117
www.bk.com

China Eight
704 E. Parrish Dr.
919-207-1813

Domino's Pizza
107 N. Honeycutt St.
919-207-5678
www.dominos.com

El Charro Mexican
Restaurant
202 N. Honeycutt Rd.
919-207-2806

Enoch Winery & Vineyard
Bistro
3735 NC Hwy 50 S.
919-207-0100
www.enochwinery.com

Glenda's Sweet Shoppe &
Grille
300 S. Wall St.
919-756-0513

Kentucky Fried Chicken
602 E. Main St.
919-894-7152
www.kfc.com

McDonald's
600 E. Main St.
919-894-8503
www.mcdonalds.com

Meadow Village Restaurant
7400 NC Hwy 50 S.
919-894-5430

Miss Maude's Café
206 E. Main St.
919-207-9000

Papa's Pizza & Italian
Restaurant
309 S. Walton Ave.
919-207-1515

Pizza Hut
702 E. Parrish Dr.
919-894-5758
www.pizzahut.com

Sheryl's Catering
700 Parrish Dr.
919-207-3009

Subway
701 E. Church St.
919-894-2034
www.subway.com

Waffle House
907 E. Main St.
919-894-4188
www.wafflehouse.com

White Swan Bar-B-Q
105 N. Honeycutt St.
919-894-4446
www.whiteswanbarbeque.com

Clayton

3 Olives Pizza and Deli
1225 Amelia Church Rd.
919-553-3330

American Hero
11453 US Hwy 70 W.
919-550-3935

Andy's Cheesesteaks &
Cheeseburgers
12989 US Hwy 70 W.
919-359-8333
www.andyscheesesteaks.com

Arby's
11851 US Hwy 70 W.
919-550-2595
www.arbys.com

Biscuitville
771 Enterprise Dr.
919-550-7444

Bojangles
11900 US Hwy 70 W.
919-550-4175
www.bojangles.com

Bonsai Restaurant
11629 US Hwy 70
919-550-6030

Burger King
101 S. Bowling St.
919-553-8308
www.bk.com

Charlie's BBQ & Grille
8948 Cleveland Rd.
919-934-0093
www.charliesbbqandgrille.org

China Delight
11471 US Hwy 70 W.
919-553-8885

Cici's Pizza
905 Town Centre Blvd.
919-359-0175
www.cicispizza.com

Clayton Bakery & Café
8928 US Hwy 70 E.
919-550-5300
www.claytonbakery.com

Clayton Steakhouse
307 E. Main St.
919-553-2299
www.claytonsteakhouse.com

Cleveland Pizza
8948 Cleveland Rd.
919-209-9939

Dairy Queen
11697 US Hwy 70 W.
919-553-2529
www.idq.com

Domino's Pizza
10425 US Hwy 70 W.
919-553-3066
www.dominos.com

El Havanero
11155 US Hwy 70 W. Bus.
919-550-9801

Emperor's Choice Chinese
Buffet
10125 US Hwy 70 W.
919-359-2288

Festejos-Mexican Bar and
Grill
905 E. Main St.
919-359-2755

Fiesta Mexicana
957 Town Center Blvd.
919-550-8888
www.fiestamexicananc.com



Granny's Hot Dogs
11924 US Hwy 70 W. Bus.
919-550-2009

Hardee's
12872 US Hwy 70 W.
919-550-4772
www.hardees.com

Jones Lunch
415 E. Main St.
919-553-7528

Kentucky Fried Chicken/
Taco Bell
11657 US Hwy 70 W.
919-553-2934
www.kfc.com

Kobe Japanese Steakhouse
820 Gully Dr.
919-359-9060
www.kobesteakhouse.com

La Cocina Mexican
Restaurant
11617 US Hwy 70 W.
919-550-7323
www.lacocinanc.com

Laugh Out Loud Comedy
Club and Lounge
8928 US Hwy 70 W. Bus.
919-359-8565
www.laughoutloudofficial.com

Little Caesars
476 Shotwell Rd.
919-550-2300
www.littlecaesars.com

Lone Star Restaurant
13049 US Hwy 70 W.
919-359-6201
www.lonestarsteakhouse.com

Long Island Express
Deli & Pizza
10368 US Hwy 70 Bus.
919-550-6800

Lucky Chicken
312 E. Main St.
919-553-5770
www.luckychickennc.com

McCall's Bar-B-Que &
Seafood
10365 US Hwy 70 W. Bus.
919-550-3877
www.mccallsbbq.com

McDonald's
11351 US Hwy 70 W.
919-553-5480
www.mcdonalds.com

McKinley's Restaurant and
Pub
11751 US Hwy 70 W.
919-553-5534

Mulberry on Main
217 E. Main St.
919-550-7400
www.mulberryonmain.com

New Jumbo China
50-D Neuse River Pkwy.
919-550-0882

Papa John's Pizza
914 NC Hwy 42 W.
919-359-9898
www.papajohns.com

Papa's Subs & Pizza
119 Oleander Dr.
919-359-9592

Pizza Hut
10175 US Hwy 70 W.
919-553-2131
www.pizzahut.com

Pizza King
Mediterranean Deli
11538 US Hwy 70 W.
919-359 3400

Quizno's Classic Subs
11689 US Hwy 70 W.
919-553-9636
www.quiznos.com

Ray's Pizza
529 NC Hwy 42 W.
919-553-6243
www.rayspizzanc.com

Rockin' Comet Diner
11637 US Hwy 70 W.
919-550-6060

Roma Pizza Shop
50 Neuse River Pkwy.
919-550-7070

Skylines Café
8878 US 70 Hwy W. Bus.
919-550-7619
www.skylinescafe.com

Smithfield's Chicken'N BBQ
10414 US Hwy 70 W.
919-553-4553
www.smithfieldschickenbarbq.com

St. George Subs
11841 US Hwy 70 W.
919-879-8382

Subway
3789 NC Hwy 42 W.
919-359-2233
www.subway.com

Subway
10159 US Hwy 70 W.
919-550-4977
www.subway.com
Subway

13024 US Hwy 70 W. Bus.
919-550-7728
www.subway.com

Super China Buffet
877 Towne Center Blvd.
919-550-1668

Taste of China
11831 US Hwy 70 W.
919-553-7852

The Coffee Mill
105 S. Lombard St.
919-550-0174

The Flip Side
405 E. Second St.
919-553-0123

The Grocery Bag
4879 NC Hwy 42 E.
919-553-4088

Venero's Pizzeria
9973 US Hwy 70 W.
919-553-0761

Waffle House
13048 US Hwy 70 W.
919-359-1599
www.wafflehouse.com

Wendy's
1001 US Hwy 70 E.
919-553-6266
www.wendys.com

Zaxby's
12857 US Hwy 70 W.
919-359-6100
www.facebook.com/Zaxbysclayton



Four Oaks

Andy's Cheesesteaks &
Cheeseburgers
5805 US Hwy 301 S.
919-963-9166
www.andyscheesesteaks.com

Doughboy's Pizza
209 E. Wellons St.
919-963-2411

JP's Ribs and Chicken
217 US Hwy 701 S.
919-989-8415

King's Restaurant
200 W. Wellons St.
919-963-3677
www.kingsrestaurantonline.com

Ming Moon
5841 US Hwy 301 S.
919-963-6530

Papa's Subs & Pizza
5831 US Hwy 301 S.
919-963-9999

Subway
5934 US Hwy 301
919-963-1000
www.subway.com

Garner (I-40, exit 312)

American Hero
5638 NC Hwy 42 W.
919-661-5566

Andy's Cheesesteaks &
Cheeseburgers
152 Bratton Dr.
919-662-2199
www.andyscheesesteaks.com

Applebee's
Neighborhood Grill & Bar
5158 NC Hwy 42 W.
919-662-7281
www.applebees.com

Bojangles
5497 NC Hwy 42
919-773-9116
www.bojangles.com

Burger King
101 Commerce Pkwy.
919-773-0467
www.bk.com

China King
5176 US Hwy 42 W.
919-772-7040

Cleveland Draft House
6101 NC Hwy 42 W.
919-771-2337
www.clevelanddrafthouse.com

Clubhouse at Cleveland
Square
51 Technology Dr.
919-662-2207

Cook Out
102 Bratton Dr.
919-661-5811
www.cookoutnc.com

Cornerstone Tea
41 Technology Dr.
919-661-4221
www.cornerstonetea.com

Cracker Barrel
5199 NC Hwy 42 W.
919-661-4044
www.crackerbarrel.com

Dairy Queen
5596 NC Hwy 42 W.
919-662-9292
www.idq.com

Domino's Pizza
5576 NC Hwy 42
919-846-9107
www.dominos.com

Fiesta Mexicana
5131 NC Hwy 42 W.
919-772-5498
www.fiestamexicananc.com

Golden Corral Steak House
60 Son-Lan Pkwy.
919-661-1111
www.goldencorral.com

Jersey Mike's Subs
106 Bratton Dr.
919-662-9933
www.jerseymikes.com

Jumbo China
61 Glen Rd.
919-771-0333

KFC/Taco Bell
5530 NC Hwy 42
919-773-2440
www.kfc.com

La Piazza
7727 NC Hwy 42
919-662-5007

Marco's Italian Restaurant
and Pizzeria
5131 NC Hwy 42 W.
919-772-1323

McDonald's
50 Glen Rd.
919-772-1677
www.mcdonalds.com

New China Star
Middle Creek Commons, 7277 Hwy
42 & 50
919-772-6668

Papa John's Pizza
7283 NC Hwy 42 W.
919-662-2226
www.papajohnsonline.com

Papa's Subs & Pizza
5176 NC Hwy 42 W.
919-779-1155

Pizza Inn
63 Son Lan Pkwy.
919-772-8883
www.pizzainn.com

Ruby Tuesday
65 Son Lan Pkwy.
919-772-3838
www.rubytuesday.com

Smithfield's Chicken 'N BBQ
5180 NC Hwy 42 W.
919-773-0774
www.smithfieldschickennbarbq.com

Subway
5477 NC Hwy 42 W.
919-779-5995
www.subway.com

TerraFin Station Steak &
Seafood
25 Old Drug Store Rd.
919-773-2220
www.terrafinstation.com

Waffle House
5607 NC Hwy 42 W.
919-772-1626
www.wafflehouse.com



Wendy's
5170 NC Hwy 42 W.
919-773-1673
www.wendys.com

Yummi Japan
87 Glen Rd.
919-772-8871
www.yummijapannc.com

Kenly

105 Pizza - Deli
595 Bagley Rd.
919-284-5182

Andy's Cheesesteaks &
Cheeseburgers
306 S. Church St.
919-284-0450
www.andyscheesesteaks.com

Arby's
Wilco Hess Travel Plaza, 1000
Truck Stop Rd.
919-284-0450
www.arbys.com

Denny's
1800 Princeton-Kenly Rd.
919-284-0372
www.flyingj.com

Golden China
406 S. Church St.
919-284-1614

Iron Skillet Restaurant
923 Johnston Pkwy.
919-284-5121
www.kenly95truckstop.com

Lowell Mill Restaurant
595 Bagley Rd.
919-284-5141
www.natsn.com/tstops/kenly_nc.htm

McDonald's
400 S. Church St.
919-284-1015
www.mcdonalds.com

Nik's Pizza
1136 Cuddington Rd.
919-284-4255

Stormin' Norman's Barbecue
404 S. Church St.
919-284-0061

Subway
923 Johnston Pkwy.
919-502 7027
www.subway.com

Waffle House
875 Johnston Pkwy.
919-284-2022
www.wafflehouse.com

Wendy's
923 Johnston Pkwy.
919-284-5121
www.wendys.com

McGee's Crossroads (I-40, exit 319)

Big Steve's Bagels and Deli
12330 NC Hwy 210
919-989-8006

Bojangles
12355 NC Hwy 210
919-209-0322
www.bojangles.com

China Star
12330 NC Hwy 210
919-934-3315

KFC/Taco Bell
12300 NC Hwy 210
919-894-1639
www.kfc.com

McDonald's
27 Crape Myrtle Dr.
919-934-3027
www.mcdonalds.com

Papa's Subs & Pizza
12101 NC Hwy 210
919-209-0861

Stephenson's Bar-B-Q
11964 NC Hwy 50 N.
919-894-4530

Subway
12330 NC Hwy 210
919-934-1015
www.subway.com

Two Cousins Pizza & Pasta
12330 NC Hwy 210
919-934-2322

Wendy's
12300 NC Hwy 210
919-934-4248
www.wendys.com

White Swan Bar-B-Q
11960 NC Hwy 210
919-989-9299
www.whiteswanbarbeque.com

Micro

Martha's Country Kitchen
102 E. Main St.
919-284-3354

Pine Level

Parkside Café
2176 US Hwy 70-A
919-965-4100
www.theparksidecafe.com

Princeton

Andy's Cheesesteaks &
Cheeseburgers
1060-A Edwards Rd.
919-936-0000
www.andyscheesesteaks.com

Bojangles
502 N. Pearl St
919-936-2491
www.bojangles.com

Hardee's
101 Smith St.
919-936-2152
www.hardees.com

Hong Kong Chinese
1060-B Edwards Rd.
919-936-0566

Nick Bombino's
405 Dr. Donnie H. Jones, Jr. Blvd.
919-936-2800

Subway
1050 Edwards Rd.
919-963-0281
www.subway.com

Selma

Bojangles
275 US Hwy 70 E.
919-965-6890
www.bojangles.com

China One
1110 S. Pollock St.
919-351-0880

Cook Out
603 Rick's Rd.
919-965-6378
www.cookoutnc.com



Selma (cont.)

Denny's
55 JR Rd.
919-965-3275
www.dennys.com

Foodies At Heart
127 N. Raiford St.
919-323-5475
www.foodiesatheart.com

Hula Girl Ice Cream and
Sandwiches
106 W. Railroad St.
919-965-6000

Kentucky Fried Chicken
406 US Hwy 70 Bus.
919-965-9238
www.kfc.com

McDonald's
335 US Hwy 70 W.
919-965-8379
www.mcdonalds.com

Mucho Mexico
318 US Hwy 70 E.
919-202-8248
www.muchoinc.com

Pizza Inn
1441 S. Pollock St.
919-965-4400
www.pizzainn.com

Robbins Nest
121 US Hwy 70-A
919-965-5522
www.robbinsnestrestaurant.com

Sami's Pizza
25 JR Rd.
919-202-0082

Shoney's
1801 Industrial Park Dr.
919-965-8886
www.shoneys.com

Short's Grill
122 N. Raiford St.
919-965-2313

The Cakery
103 S. Raiford St.
919-965-2249
www.thecakeryofselma.com

Uncle Bill's Sub Shop
1425 S. Pollock St.
919-965-5226

Waffle House
1815 Industrial Park Dr.
919-965-8342
www.wafflehouse.com

Smithfield

A Bite Of Italy
388 Venture Dr.
919-934-8259

Andy's Cheesesteaks &
Cheeseburgers
819 N. Bright Leaf Blvd.
919-209-9815
www.andyscheesesteaks.com

Angelo's Pizza
1267 N. Bright Leaf Blvd.
919-938-2220

Applebee's Neighborhood
Grill & Bar
1260 N. Bright Leaf Blvd.
919-989-8885
www.applebees.com

Arby's
1202 N. Bright Leaf Blvd.
919-989-8007
www.arbys.com

Barbee's Seafood
728 N. Bright Leaf Blvd.
919-934-7244

Becky's Log Cabin
2491 US Hwy 70 Bus E.
919-934-1534
www.beckyslogcabin.com

Biscuit Stop
820 S. Bright Leaf Blvd.
919-934-9235

Bistro on Third
146 S. Third St.
919-989-4931
www.bistroonthird.webs.com

Bob Evans
907 Venture Dr.
919-938-1267
www.bobevans.com

Burger King
1932 E. Market St.
919-934-9856
www.bk.com

Checkers
1691 E. Market St.
919-989-2007
www.checkers.com

Chick-Fil-A
1300 N. Bright Leaf Blvd.
919-938-0058
www.chick-fil-a.com

Cici's Pizza
161 Industrial Park Dr.
919-938-2424
www.cicispizza.com

Cracker Barrel
1109 Industrial Park Dr.
919-989-2140
www.crackerbarrel.com

Dairy Queen
Carolina Premium Outlets,
1025 Industrial Park Dr.
919-934-0066
www.idq.com

Domino's Pizza
515 E. Market St.
919-934-1221
www.dominos.com

Dunkin' Donuts
1006 N. Bright Leaf Blvd.
919-938-4200
www.dunkindonuts.com

Eden's Vegetarian Dining
The Dupree House, 709 S. Third St.
919-938-3880
www.edensvegetarian.com

El Sombrero Mexican
519 Industrial Park Dr.
919-989-9889

Gandolfo's NY Deli
224 E. Market St.
919-934-9100
www.gandolfosdeli.com

Golden Corral Steak House
100 Towne Centre Pl.
919-934-0508
www.goldencorral.com

Hardee's
1262 N. Bright Leaf Blvd.
919-934-5580
www.hardees.com

Heidi's Two-Wheel Café
1475 W. Market St.
919-989-8389

Hibachi Grill &
Supreme Buffet
1273 N. Bright Leaf Blvd.
919-989-8088



Holt Lake BBQ & Seafood
3506 US Hwy 301 S.
919-934-0148

Kobe Japanese Steakhouse
101 Venture Dr.
919-938-3200
www.kobesteakhouse.com

La Cocina Mexican
1285 N. Bright Leaf Blvd.
919-938-7002
www.lacocinanc.com

Mayflower Seafood
1625 W. Market St.
919-989-1156

McDonald's
884 W. Market St.
919-934-9306
www.mcdonalds.com

McDonald's
1209 N. Bright Leaf Blvd.
919-934-3588
www.mcdonalds.com

Mucho Mexico
712 E. Market St.
919-989-6889
www.muchoMexicoinc.com

N & N Sports Bar & Grill
150 S. Equity Dr.
919-989-7896

No. 1 Chinese
903 S. Bright Leaf Blvd.
919-209-9788

Outback Steakhouse
911 Industrial Park Dr.
919-989-3056
www.outback.com

Papa John's Pizza
1258 N. Bright Leaf Blvd.
919-938-1900
www.papajohns.com

Pizza Hut
725 N. Bright Leaf Blvd.
919-934-5926
www.pizzahut.com

Quizno's Classic Subs
250 Venture Dr.
919-938-0000
www.quiznos.com

Ruby Tuesday
119 Industrial Park Dr.
919-938-3640
www.rubytuesday.com

Smithfield's Chicken 'N'
BBQ
924 N. Bright Leaf Blvd.
919-934-8721
www.smithfieldschickennbarbq.com

Subway
150 Equity Dr.
919-938-0004
www.subway.com

Subway
905 S. Bright Leaf Blvd.
919-989-1869
www.subway.com

Subway
1245 N. Bright Leaf Blvd.
919-989-6869
www.subway.com

Taco Bell
1217 N. Bright Leaf Blvd.
919-989-8877
www.tacobell.com

Taste of China
1263 N. Bright Leaf Blvd.
919-989-1120

Texas Steakhouse & Saloon
235 Industrial Park Dr.
919-938-3221
www.steakology.com

The Chicken Barn
703 E. Market St.
919-934-6866

The Coffee Pot
817 S. Bright Leaf Blvd.
919-989-9053

The Diner
314 E. Market St.
919-934-6644

Waffle House
1655 Market St.
919-938-1575
www.wafflehouse.com

Wendy's
807 W. Market St.
919-934-7563
www.wendys.com

Wendy's
1131 N. Bright Leaf Blvd.
919-934-0600
www.wendys.com

White Swan Bar-B-Q
3198 US Hwy 301 S.
919-934-8913
www.whiteswanbarbeque.com

White Swan Bar-B-Q Express
3103 US Hwy 70 E.
919-202-5932
www.whiteswanbarbeque.com

Yummi Japan
255 N. Equity Dr.
919-934-8889
www.yummijapannc.com

Zack's Char-Grill
618 E. Market St.
919-989-9227

Zaxby's
1703 E. Market St.
919-938-1700
www.facebook.com/Zaxbysclayton

Wilson's Mills

White Swan Bar-B-Q
3655 Wilson's Mills Rd.
919-989-6500
www.whiteswanbarbeque.com

Zebulon

Creech's Deli
11805 NC Hwy 39
919-269-7731



Places to meet

Benson

Gregory Vineyards 919-894-7700

275 Bowling Springs Dr., Angier | www.gregoryvineyards.com
Escape to this 120-acre working farm and winery for a country backdrop wedding.

Enoch Winery & Vineyard 919-207-0100

3735 NC Hwy 50 S., Benson | www.enochwinery.com
The vineyard's 120 acres provides a perfect setting for a quaint Southern wedding.

Preston Woodall House

Bed & Breakfast 919-894-7025

201 E. Hill St., Benson | www.woodallhouse.com
Historic Queen Anne Bed & Breakfast home with 3,000 square feet of meeting space for special events and weddings.

W. J. Barefoot Auditorium 919-894-5117

303 E. Church St., Benson | www.townofbenson.com
This 330-seat performing arts auditorium is perfect for concerts, assemblies, pageants, and theatrical productions.

Clayton

Dr. Watson Inn 919-553-1984

500 Flowers Pkwy., Clayton | www.flowersplantation.com
Historic Bed & Breakfast available for social events, weddings and family gatherings.

The Clayton Center 919-553-3152

111 E. Second St., Clayton | www.theclaytoncenter.com
Six meeting rooms outfitted with AV, a 600 seat auditorium for large presentations, reception space for groups to 450, and event staff dedicated to meeting planning.



Morning Glory Inn 919-550-8547

507 E. Second St., Clayton | www.morning-glory-inn.com
A stately Victorian home offering facilities for intimate weddings, business retreats/meetings or banquets for 25 to 40 people or the entire home's capacity for events is 125 people.

Portofino 919-270-0089

25 Paraggi Ct., Clayton | www.portofinonc.com
This 400-acre gated horse community offers a club house and barn for special events.

The Wagner House 919-550-0065

121 East Main St., Clayton | www.historicwagnerhouse.com
Historic home located in downtown Clayton for weddings, social functions and small meetings.

The Hall and Gardens at Landmark 919-329-7674

12450 Cleveland School Rd., Garner | www.thehallatlandmark.com
Beautiful gardens available for ceremonies and ballroom for up to 250 people for receptions and parties.

Pine Level

Hinnant Family Vineyards & Winery 919-965-3350

826 Pine Level-Micro Rd., Pine Level | www.hinnantvineyards.com
Get married among the 75 acres of vineyards and hold the reception in the "Barrel Room" for groups up to 150 people.



For small meetings of 20 to 150 people choose from these local hotels:

**Becky's Log Cabin
Motel & Restaurant 919-934-1534**
2491 US Hwy 70 Bus. E., Smithfield

Comfort Inn 919-938-4444
170 S. Equity Dr., Smithfield

Comfort Inn 919-773-1110
126 Cleveland Crossing Dr., Garner

Comfort Suites 919-553-1234
761 Enterprise Dr., Clayton

Hampton Inn 919-773-1977
100 Hampton Dr., Garner

Hampton Inn 919-965-6151
1695 Industrial Park Dr., Smithfield

Holiday Inn Express 919-719-3415
105 Leone Ct., Garner

Masters Inn 919-965-3771
318 US Hwy 70 E., Selma

Sleep Inn 919-772-7771
105 Commerce Pkwy., Garner

Sleep Inn & Suites 919-209-2360
270 N. Equity Dr., Smithfield



Smithfield

Atkinson-Smith House **919-934-5115**

8514 Brogden Rd., Smithfield | www.southerncharmwedding.com
This historic restored antebellum home (c.1850's) is a unique Southern setting your next special event.

Ava Gardner Museum **919-934-5830**

325 E. Market St., Smithfield | www.avagardner.org
Unique museum setting for special events, weddings and groups offering packages for up to 150 people.

Johnston County Cooperative

Extension/Agricultural Center **919-989-5380**

2736 NC Hwy 210, Smithfield | www.johnston.ces.ncsu.edu
This 4900 square foot ballroom subdivides into three sections of 2600, 992 and 744 sq feet.

Johnston Medical Mall

First Citizens Conference Room **919-938-7186**

514 N. Bright Leaf Blvd, Smithfield
Classroom style auditorium for 120 people and two breakout rooms for 40 people each.

Paul A. Johnston Auditorium **919-209-2112**

245 College Rd., Smithfield | www.jccperformingarts.com
The facility includes a 1,000-seat performing arts auditorium and grand hall that accommodates 300 people.

Smithfield Recreation & Aquatics Center **919-934-2148**

600 Booker Dairy Rd., Smithfield
The 70,000 square foot recreation and aquatic center offers versatile space for sporting events as well as a conference room that seats 150 people for special events and meetings.



Charming Convenient



Located just 30 minutes from the state capitol, the communities of 40/42, Benson, Clayton, Smithfield, and Pine Level have built unique wedding venues... offering something old and something new for brides getting married in the Triangle!

Johnston County is conveniently located at the crossroads of I-95 and I-40, 15 minutes east of Raleigh. Johnston County has the good fortune to offer couples an assortment of wedding venue and service options. Brides will appreciate Johnston County's southern charm and affordability as a Triangle Area wedding destination.

For More information contact:

Amanda Astoske

aastoske@johnstoncountync.org



Transportation

Taxi Services

Benson Cab Co. **919-701-5120**
100 W. Church St., Benson

Eddie Bee's Executive Coach **919-553-1791**
200 Daffodil Ln., Clayton | www.eddiebees.com

Tele Taxi **919-202-4511**
1006 S. Pollock St., Selma

Yellow & Checker Cab Co. **919-934-2552**
504 E. Market St., Smithfield | www.yellowcabnc.com

Airports

Johnston County Airport **919-934-0992**
3149 Swift Creek Rd., Smithfield | www.jnx-airport.com

Raleigh Durham International Airport **919-840-2123**
1000 Trade Dr., RDU Airport | www.rdu.com

Bus Transportation

Greyhound and Trailways **919-934-8272**
600 S. Bright Leaf Blvd., Smithfield | www.greyhound.com

Car Rental

Enterprise Rent-A-Car **919-938-2562**
831 N. Bright Leaf Blvd., Smithfield | www.enterprise.com

Auto, RV, and Truck Services

Big Boys Truck Auto Plaza **919-284-4046**
595 Bagley Rd., Kenly | www.natsn.com/tstops/kenly_nc.htm

Cummins Atlantic, Inc. **919-284-9111**
350 Cummins Dr., Kenly | www.cumminsatlantic.com/northcarolina.htm

Flying J Travel Plaza **919-284-4548**
1800 Princeton Kenly Rd., Kenly | www.flyingj.com

Kenly 95 Petro **919-284-5121**
923 Johnston Pkwy., Kenly | www.kenly95truckstop.com

Specialty Transportation

J & L Carriage **919-936-2586**
5475 Massey-Holt Rd., Princeton | www.jlcarriage.com

JCATS **919-202-5030**
1363 W. Market St., Smithfield | www.jcats.org

On Demand Transportation Services **919-934-4565**
956 Freedom Rd., Smithfield | 1-866-934-4565

Train

NC AMTRAK **800-USARAIL**
Selma Historic Union Station, 500 Railroad St., Selma
www.amtrak.org

Travel Agencies

A Travel Odyssey **919-934-1862**
315 S. Third St., Smithfield

Cruises, Inc **866-455-1016**
105 Bradborne Cir., Clayton | www.cruisesinc.com/dbean

Going Places! Custom Travel **919-550-0417**
13 Wedgewood Pl., Clayton | www.goingplacescustomtravel.com

Small World Travel & Tours, LLC **800-894-1537**
101 E. Hill St., Benson | www.gotsaltlife.com



Annual events

February

Black History Month - Gospel Fest **919-209-2531**

Paul A. Johnston Auditorium and Lobby, Johnston Community College, Smithfield. | www.johnstoncc.edu

In celebration of Black History Month, this entertaining annual event offers performances by community groups including choirs, dance troupes, mimes and solo performers. Free.

March

Bentonville Battlefield's Anniversary Event **910-594-0789**

Bentonville Battlefield State Historic Site, Four Oaks. | www.nchistoricsites.org/bentonville/

The Anniversary of the Battle of Bentonville features artillery and infantry demonstrations held throughout both days. Call for program details. Free.

April

Annual Selma Car Classic **919-202-0483**

Uptown Selma. | www.visitselma.org

Classic cars showcased up & down the streets of Uptown Selma. Free.

Krusin' Kenly **919-284-5510**

Downtown Kenly. | www.visitkenly.org

On Friday enjoy the street dance and on Saturday, yard sales, classic car parade, ugly truck contest, Krusin' Kenly Idol contest and lots more. Free.

Strawberry Festival **919-773-8448**

Technology Dr., Hwy 40 & 42 | www.greaterclevelandchamber.com

All day celebration for the community focused on family fun and entertainment including classic car show, face painting and activities for kids, lots of food and of course, strawberries!! Free.

May

Flower Hill Rhodo Ramble **919-833-3662 x102**

Flower Hill | www.triangleland.org

A traditional early May nature walk at this Johnston County jewel for the magnificent blooms of Catawba rhododendron and other wildflowers. Free.



Four Oaks Acorn Festival **919-963-4004**

Elementary School Football Field, Four Oaks. | www.visitfouroaks.org

Entertainment, live music, rides, street dance, parade, tractor pull, golf tournament, games, contest and food and arts/craft vendors.

Lazy O Farm Summer Dayz **919-934-1132**

3583 Packing Plant Rd., Smithfield. | www.visitsmithfield.org

Learn how seeds and cows provide lots of your favorite foods like ice cream and butter. Also enjoy hayrides and barnyard animals. Held May, June, and July. By appointment. Admission.

Smithfield Ham & Yam Festival **919-934-0887**

Throughout Downtown Smithfield. | www.hamandyam.com

The Annual Ham & Yam Festival is teaming with ham biscuits, barbecue pork, and sweet potatoes. There will be arts, crafts, kid's activities, live entertainment, pig cooking contest, "What's That Yam Thing?", and piglet races. Free.

Mother's Day Festival **919-934-1700**

443 Sanders Rd., Benson. | www.smiths-nursery.com

Enjoy strawberry picking, fresh produce, flowering plants, fishing, and farm animals. Admission.

June

Millstock Music & Arts Faire **919-359-3649**

Horne Square | www.claytonvisualartsnc.org

Local artists, hand crafted arts and crafts, children's art creation station, "Chalk It Up" contest, live music on the square and at The Flipside.

State Annual Singing Convention **919-894-4389**

Benson Singing Grove, Benson. | www.gospelsingingconvention.org

The oldest Southern gospel convention in the nation includes three days of gospel music competition including amateur duets, trios, quartets, choirs, and family groups. Free.

Summer Living History Series **910-594-0789**

Bentonville Battlefield State Historic Site, Four Oaks. | www.nchistoricsites.org

Discover how Civil War soldiers lived in camp and what role the enlisted man played in battle. Call for program details. Free.

Fourth of July Events

Celebrate Cleveland Event	919-934-6187
Coats Ringing of the Bells Celebration	919-894-4443
Town of Archer Lodge	919-359-9727
Town of Benson	919-894-5117
Town of Pine Level	919-965-2284
Town of Selma	919-965-9841
Town of Smithfield	919-934-0887
Town of Clayton	919-553-1550
Town of Kenly	919-284-2116

August

Summer Living History Program

& Artillery Demonstration **910-594-0789**

Bentonville Battlefield State Historic Site, Four Oaks.

www.nchistoricsites.org/bentonvi/

The sounds of artillery and musket fire will once again ring out at Bentonville Battlefield. Costumed living historians will discuss the typical soldier's life. Free.

September

Benson Mule Days **919-894-3825**

Downtown Benson and Chamber Park. | www.bensonmuledays.com

A Southern tradition for over 60 years, this four day family-fun festival is packed with mule competition events, rodeos, carnival rides, arts and crafts, street dances and concerts. Admission for rodeos.

Clayton Harvest Festival **919-553-6352**

Downtown Clayton | www.claytonchamber.com

Enjoy this family event with carnival rides, games and food. Saturday festival highlights include arts and crafts, merchant auction, Clayton Idol Contest, antique car show, and live entertainment throughout the day.

Faith Festival **919-934-0887**

Neuse River Amphitheatre, Front St., Smithfield. | www.downtownsmithfield.com

Downtown Smithfield Development Corporation presents the Annual Faith Festival with a "new sound, new faces, same Lord". Free.

St. Ann's 4th Annual International Food Festival **919 934-2084**

St. Ann Catholic Church, 4057 US 70 Hwy Business W, Clayton.

www.st-annschurch.org

Come be a part of this wonderful festival with foods representing fifteen countries from around the world, music and games for children. Free.

October

Annual Fall Festival **919-934-1700**

443 Sanders Rd., Benson. | www.smiths-nursery.com

Enjoy hayrides, pumpkins, millet maze, fishing, farm animals with produce and plants available. Admission.

Annual Ava Gardner Festival **919-934-5830**

Ava Gardner Museum, 325 E. Market St., Smithfield. | www.avagardner.org

Celebrate all things Ava with heritage tours, free showings of Ava Gardner films, and special exhibits. Admission.

Annual Railroad Days Festival **919-975-1411**

Uptown Selma | www.visitselma.org

Come join us in Uptown Selma as we celebrate our rail heritage with our Annual Railroad Days Festival with a 5K run, parade, crafts, food, children's area, and a variety of entertainment. Free.

Archer Lodge Country Auction **919-550-1738**

Archer Lodge Community Building. | www.archerlodge.org

The annual event begins with BBQ plates and homemade desserts, followed by a country auction of crafts and food products.

Ava Gardner Independent Film Festival **919-601-3131**

Downtown Smithfield | www.visitsmithfield.org

Enjoy this celebration of contemporary independent films from around the world in a wide variety of genres. Admission.

Clayton Fear Farm **919-553-0016**

Boyette Farm | www.claytonfearfarm.com

Eight attractions include haunted houses, corn maze, haunted hayride, spinning vortex, haunted outdoor walking maze. Admission.

Clayton Fear Farm Daytime Activities **919-553-0016**

Boyette Farms | www.claytonfearfarm.com

Family Fall Fun offering the "non-scary" corn maze, Pumpkin Patch, and 3D house. Admission.

Haunted House **919-894-3724**

Mary Duncan Public Library | www.visitbenson.org

In honor of our resident ghost "George", the library's basement is turned into a haunted house. Admission.

Historical Ghost Walk **919-934-2836**

Riverside Cemetery, corner of South Second and Church Streets, Smithfield.

www.visitsmithfield.org

Small groups will be guided through the cemetery where costumed re-enactors will tell stories about famous (and perhaps infamous) persons buried there. Admission.



Lazy O Farm Maze Dayz **919-934-1132**

3583 Packing Plant Rd., Smithfield. | www.visitsmithfield.org

Fun farm education Mille Maze with learning stations, hayrides, pumpkins and farm animals. By appointment. Admission.

On the Homefront in NC:

Life at Home During the Civil War **910-594-0789**

Bentonville Battlefield State Historic Site, Four Oaks
www.nchistoricsites.org/bentonvi/

Costumed living historians will demonstrate a variety of mid 19th century domestic life. Call for program details. Free.

Wilson's Mills Pumpkin Festival **919-938-3885**

Downtown, Wilson's Mills. | www.wilsonsmillsnc.org

Events will include a 5K run, food and craft vendors, bike show, antique farm equipment show, children's games, and the "Great Pumpkin" Contest! Free.

November

American Music Jubilee Christmas Show **919-202-9927**

Rudy Theatre, 300 Raiford St., Selma. | www.amjubilee.com

Take a nostalgic trip back to an innocent age when anticipation of Santa's visit made the holidays magical. Enjoy gospel favorites and the contemporary beat of hits like "Christmas in Dixie". Matinees and evening shows. Admission.

Howell Woodstock! **919-938-0115**

Howell Woods, Four Oaks. | www.howellwoods.org

Celebrate the ecological, recreational, and scenic features of Howell Woods with hiking, hayrides and recreational activities for the whole family! Free.

Lazy O Farm Turkey Dayz **919-934-1132**

3583 Packing Plant Rd., Smithfield. | www.visitsmithfield.org

Bring your Thanksgiving feast to the farm with picnic areas, hayrides, fun farm education and farm animals. By appointment. Admission.

Meadow Lights **919-894-4370**

4546 Godwin Lake Rd. | www.meadowlights.net

The largest fantasy of Christmas Lights in this area! Enjoy an authentic manger scene, carousel ride and candy store. Lights free.

Princeton Veterans Day Celebration **919-965-5661**

Center & Edwards Sts., Princeton. | www.myprincetonnc.com

Join the celebration and support those in service to our country past and present with a parade, contests, entertainment, guest speakers and more!

December

"A Civil War Christmas" Holiday Open House **910-594-0789**

Bentonville Battlefield State Historic Site, Four Oaks.
www.nchistoricsites.org/bentonvi/

Come celebrate a Civil War Christmas with costumed interpreters will decorate the kitchen in festive themes using natural materials such as holly, magnolia, cotton stalks, fruit, cranberry & popcorn strands. Free.

Lazy O Farm Christmas Dayz **919-934-1132**

3583 Packing Plant Rd., Smithfield. | www.visitsmithfield.org

Journey to Bethlehem Maze complete with nativity animals, campfire and marshmallow roasting, Santa, crafts, and hayrides. By appointment. Admission.

Lights on the Neuse **919-553-0016**

Boyette Farm | www.lightsontheneuse.com

Come for family Christmas fun with a hayride filled with holiday lights and scenes. There is a candy shop and you can have your picture made with Santa! Admission.

Christmas Tree Lightings and Parades

The holidays are special times for family, friends and our communities to decorate the streets, light Christmas trees and line up for parades. Check with local towns and community organizations for dates and times.

Town of Archer Lodge	919-359-9727
Town of Benson	919-894-5117
Town of Clayton	919-553-6352
Town of Four Oaks	919-963-2581
Town of Kenly	919-284-5510
Town of Micro	919-284-2572
Town of Pine Level	919-965-2284
Town of Princeton	919-936-8581
Town of Selma	919-965-9841
Town of Smithfield	919-934-0887
Township of Cleveland	919-773-8448

Join our calendar of events email list at:

www.johnstoncountync.com

and receive monthly updates.



Visitors Guide

JOHNSTON COUNTY
NORTH CAROLINA



Built in 1880 as a boarding house, the Yelvington- Lee House was moved in 1987 to become the home of the Johnston County Visitors Information Center and the Greater Smithfield Selma Area Chamber of Commerce.

The Visitors Center is located on 1115 Industrial Park Drive, adjacent to the Carolina Premium Outlets, I-95 Exit 95 or 97. Hours open to the public are 8:30am-5pm, Mon-Fri. After-hours information is available at the gazebo.



For the latest travel information, stop by our visitor information center adjacent to the Carolina Premium Outlets in Smithfield, or visit us on the world wide web.

1-800-441-stay

www.johnstoncountync.org
info@johnstoncountync.org

Keep up with on Facebook,
Twitter, YouTube, and Flickr!



© 2012 Johnston County Visitors Bureau.
The information in this guide is believed to be accurate at the time of printing. Information and prices are subject to change without notice. Call individual businesses for confirmation. The Johnston County Visitors Bureau assumes no responsibility for errors or omissions. Corrections are welcome.

Visitors Guide

Smithfield ♦ Selma ♦ Clayton ♦ 40/42
Benson ♦ Four Oaks ♦ Kenly

It's our

Mature

Museums

Farm Markets

Festivals

Three Vineyards
and Wine Trail

JOHNSTON COUNTY
NORTH CAROLINA

1-800-441-stay
www.johnstoncountync.org